

Recent jets and drops

John Hinch

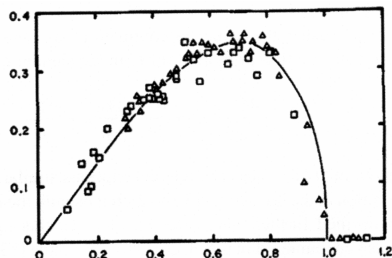
DAMTP-CMS, Cambridge University

May 21, 2008

Reviews

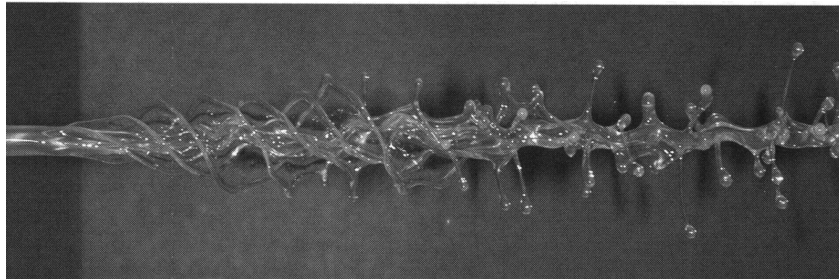
- ▶ *Breakup of Liquid Sheets and Jets* by S. P. Lin (CUP 2003) (286 pages)
- ▶ *Physics of liquid jets* by Jens Eggers and Emmanuel Villermaux (2008) Rep. Prog. Phys. 71, 036601 (79 pages)

Rayleigh (inviscid)
growth rates



Spinning jet

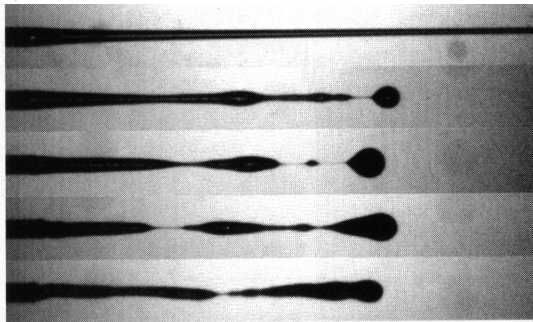
$$\mu = 2.3 \cdot 10^{-4} \text{ Pa}\cdot\text{s}, \quad \gamma = 27 \cdot 10^{-3} \text{ N/m}, \quad v = 2.2 \text{ m/s}, \quad \omega = 346 \text{ s}^{-1}$$



Kubitachek & Weidman (Nov 2007) PoF

Jet of suspended particles

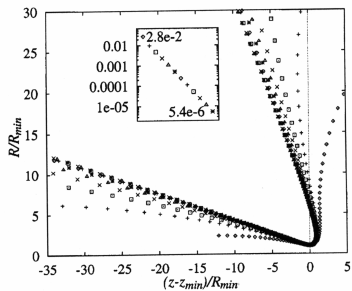
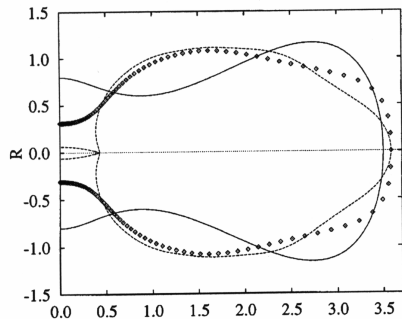
Particles $200\mu\text{m}$, jet 1.6mm , $Re = 0.4$, $\phi = 0, 0.05, 0.1, 0.2, 0.3$



Furbank & Morris (2004) PoF

Jet pinch off

Inviscid numerics



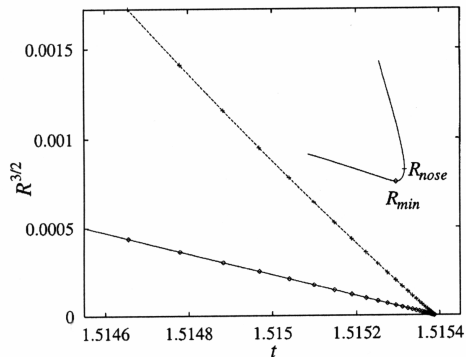
Self-similar shape: double cone

Day, Hinch & Lister (1998) PRL

Jet pinch off

Numerics, Inviscid

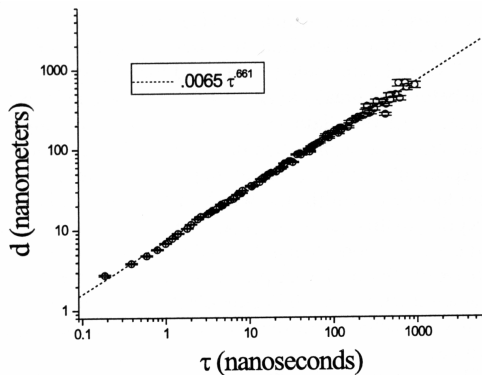
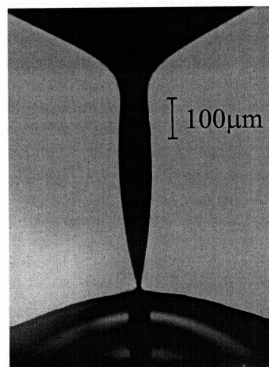
Scaling $\rho \partial u / \partial t = -\nabla p$ & $p = \gamma / r$ gives $R \propto [\gamma(t_* - t)^2 / \rho]^{1/3}$



Day, Hinch & Lister (1998) PRL

Jet pinch off

Experiments



Radius measured by electrical conduction through Hg.

Burton, Rutledge & Taborek (2004) PRL

Jet pinch off

The viscous-inertial-capillary length:

$$\ell = \mu^2 / (\gamma \rho)$$

0.3nm (Hg), 12nm (water), 96 μ m (83% glycerol)

Inviscid

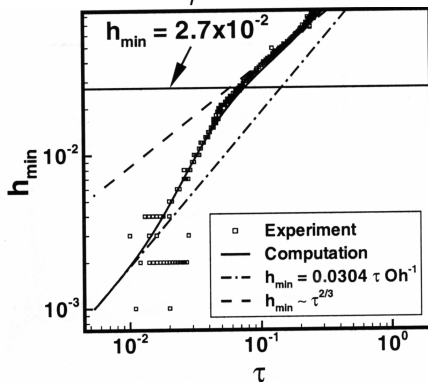
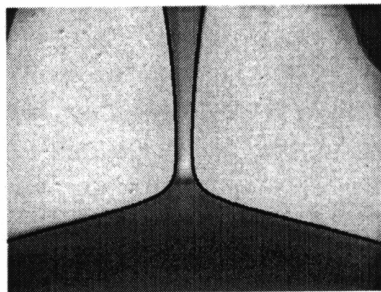
$$r > \ell : R(t) \propto (t_* - t)^{2/3}$$

Viscous

$$r < \ell : R(t) \propto (t_* - t)$$

Inertial-viscous pinchoff experiment

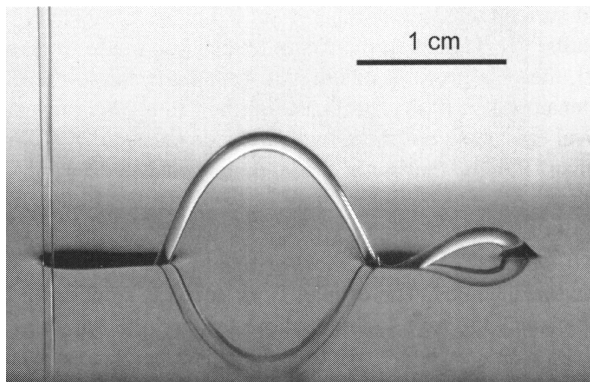
Experiments with 83% glycerol, transition at $96\mu\text{m}$



Chen, Notz & Basaran (2002) PRL

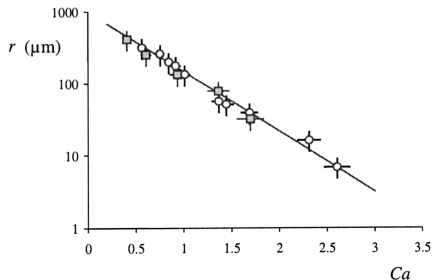
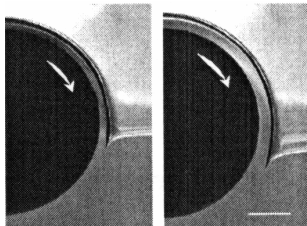
Jet into a moving bath

$$V_{\text{bath}} = 15.7 \text{ cm/s}, \mu = 106 \text{ mPa s}, Q = 0.35 \text{ cm}^3/\text{s}, H = 5.0 \text{ cm}$$



Thrasher, Jung, Pang & Swinney (Sept 2007) PoF

'Jet' into a stationary bath



Radius of tip from force balance $8\pi\mu U / \ln(d/r_c) = 2\gamma$

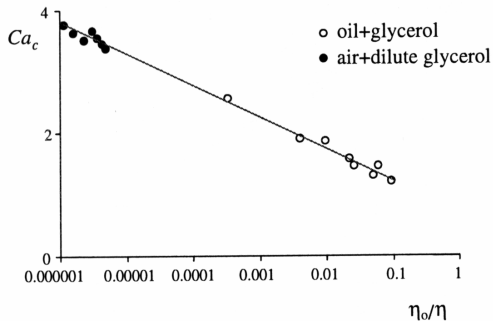
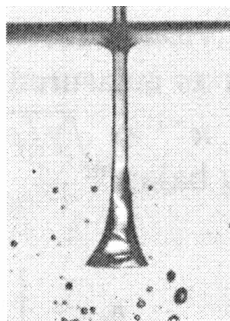
Lorencean, Restango & Quere (2003) PRL

Jet into a bath

Fracturing a fluid

Maximum velocity before entrain air $Ca_c \propto \ln(\mu_a/\mu_l)$

Eggers (2001) PRL

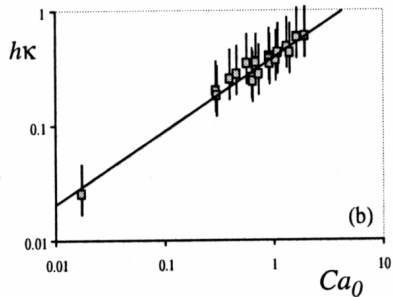
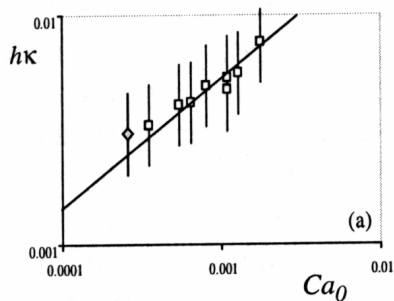


Lorenceanu, Restango & Quere (2003) PRL

Jet into a bath

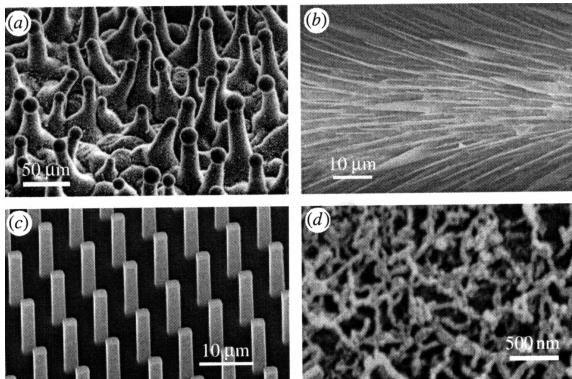
Fracturing a fluid

Thickness h of entrained air film $h = 0.5\sqrt{\gamma/\rho g}Ca^{2/3}$



Lorencean & Quere (2004) PRL

Rough superhydrophobic surfaces

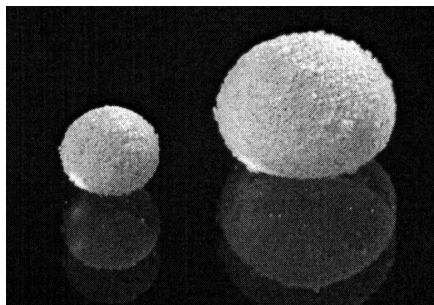
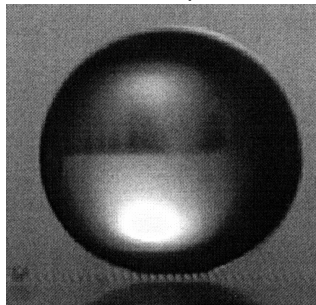


(a) Magnolia leaf, (b) hairs on water strider, (c) etched, (d) sponge

Quere & Reyssat (May 2008) Phil Trans RS

Rough superhydrophobic surfaces

Millimetric drop on microposts

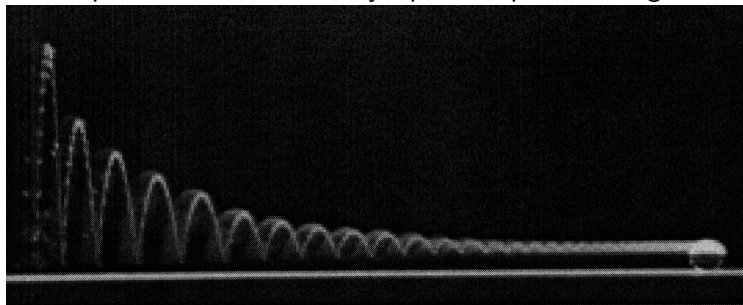


Water drop coated with lycopodium powder on glass

Quere & Reyssat (May 2008) Phil Trans RS

Bouncing drops

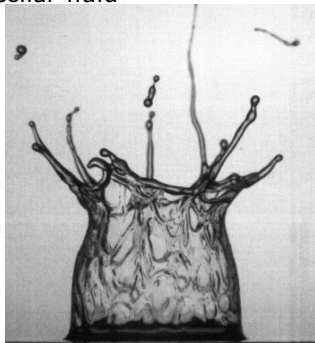
Water drop 0.4mm coated with lycopodium powder on glass



Richard & Quere (2002) Europhys Lett

Splashing elastic drops

$V = 7.5 \text{ m/s}$ impact of 0.2 ml of aqueous drop of 350mM sodium salicylate onto 2 mm aqueous film of 350mM cetyltrimethylammonium bromide, which together produce highly elastic worm-like micellar fluid



Grumstrup & Belmonte (Sept 2007) PoF

- ▶ *Breakup of Liquid Sheets and Jets* by S. P. Lin (CUP 2003) (286 pages)
- ▶ *Physics of liquid jets* by Jens Eggers and Emmanuel Villermaux (2008) Rep. Prog. Phys. 71, 036601 (79 pages)
- ▶ *Gouette, bulles, perles et ondes* by Pierre-Giles de Gennes, François Brochard-Wyart & David Quéré (Belin 2002)