

# Part II Applications of Quantum Mechanics

## Lent 2010

Prof. R.R. Horgan

January 29, 2010

### BOOKS

- D.J. Griffiths *Introduction to Quantum Mechanics*, 2nd edition, Pearson Education 2005.
- N.W Ashcroft and N.D. Mermin *Solid-State Physics*, Holt-Saunders 1976.
- L.D. Landau and E.M. Lifshitz *Quantum Mechanics (Course in Theoretical Physics Vol 3)*, Butterworth-Heinemann 1976.
- L. Schiff *Quantum Mechanics*, McGraw-Hill Book Company.
- B. Dutta-Roy *Elements of Quantum Mechanics*, New-Age Science Limited.

Other books may be recommended through the course. Also, consult particular topics in library books since many books are good in one area but poor in another.

# 1 The Variational Principle

A quantum system has a hermitian Hamiltonian  $H$  with energy eigenvalues  $E_0 \leq E_1 \leq E_2 \leq \dots$ , which are assumed to be discrete, and corresponding stationary states (eigenfunctions)

$$\psi_0, \psi_1, \psi_2, \dots \quad (1.1)$$

which are orthogonal and chosen to be normalized to unity.

Let  $\psi$  be a general normalized state. Its energy expectation value is

$$\langle E \rangle = \langle \psi | H | \psi \rangle. \quad (1.2)$$

We can always expand  $\psi$  on the complete basis of states in eqn. (1.1) as

$$\psi = \sum_{n=0}^{\infty} a_n \psi_n \quad \text{with} \quad \sum_{n=0}^{\infty} |a_n|^2 = 1. \quad (1.3)$$

Then

$$\begin{aligned} \langle E \rangle &= \sum_{n,m} a_n^* a_m \langle \psi_n | H | \psi_m \rangle \\ &= \sum_{n,m} a_n^* a_m E_m \delta_{nm} \\ &= \sum_n |a_n|^2 E_n. \end{aligned} \quad (1.4)$$

Clearly, the minimum of  $\langle E \rangle$  is  $E_0$  and occurs when  $a_0 = 1$ ,  $a_n = 0, n > 0$ ; i.e., when  $\psi = \psi_0$ . This implies the **variational definition** of  $E_0$ :

The ground state energy  $E_0$  is the minimum of  $\langle \psi | H | \psi \rangle$  with respect to the choice of  $\psi$ , or equivalently of  $\frac{\langle \psi | H | \psi \rangle}{\langle \psi | \psi \rangle}$  if  $\psi$  is not normalized; this is the **Rayleigh-Ritz quotient**

## 1.1 Estimating $E_0$

This is a useful application of the variation approach when  $\psi_0$  and  $E_0$  cannot be easily or accurately computed.

Consider a trial wavefunction  $\psi$  which depends on a few parameters  $\alpha$ . Calculate

$$\langle E \rangle(\alpha) = \langle \psi | H | \psi \rangle(\alpha) \quad (1.1.1)$$

and minimize with respect to  $\alpha$ . The minimum value of  $\langle E \rangle$  is an **upper bound** on  $E_0$  since, by expanding  $\psi$  as in eqn. (1.3) and using eqn. (1.4), we may always write

$$\langle E \rangle = \sum_n |a_n|^2 E_n = E_0 \sum_n |a_n|^2 + \sum_n |a_n|^2 (E_n - E_0) \geq E_0. \quad (1.1.2)$$

This follows since  $\sum_n |a_n|^2 = 1$  and the last term is non-negative since  $E_n > E_0, n \geq 1$ .

## 1.2 Accuracy

Write

$$\psi = \frac{1}{\sqrt{1 + \varepsilon^2}} (\psi_0 + \varepsilon\psi_\perp), \quad (1.2.1)$$

where  $\psi_\perp$  is a linear superposition of  $\psi_1, \psi_2, \dots$ , so  $\langle \psi_0 | \psi_\perp \rangle = 0 \implies \langle \psi_0 | H | \psi_\perp \rangle = 0$ . Then

$$\begin{aligned} \langle E \rangle &= \frac{1}{1 + \varepsilon^2} \langle \psi_0 + \varepsilon\psi_\perp | H | \psi_0 + \varepsilon\psi_\perp \rangle \\ &= \frac{1}{1 + \varepsilon^2} (E_0 + \varepsilon^2 \langle \psi_\perp | H | \psi_\perp \rangle) \\ &= \frac{1}{1 + \varepsilon^2} (E_0 + \tilde{E}) \quad \text{where} \quad \tilde{E} \geq E_1 \\ &= E_0 + \varepsilon^2 (\tilde{E} - E_0) + \dots \end{aligned} \quad (1.2.2)$$

We deduce that an  $O(\varepsilon)$  error in  $\psi$  gives  $O(\varepsilon^2)$  error in estimate for energy  $E_0$ . In many cases can get estimate that is very close to  $E_0$ .

## 1.3 Evaluation of $\langle \psi | H | \psi \rangle$

For

$$H = -\frac{\hbar^2}{2m} \nabla^2 + V(\mathbf{x}) \quad (1.3.1)$$

have

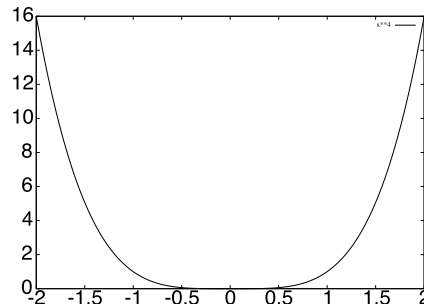
$$\begin{aligned} \langle \psi | H | \psi \rangle &= \int \psi^*(\mathbf{x}) \left( -\frac{\hbar^2}{2m} \nabla^2 \psi(\mathbf{x}) + V(\mathbf{x}) \psi(\mathbf{x}) \right) d\mathbf{x} \\ &= \int \left( \frac{\hbar^2}{2m} \nabla \psi^*(\mathbf{x}) \cdot \nabla \psi(\mathbf{x}) + \psi^*(\mathbf{x}) V(\mathbf{x}) \psi(\mathbf{x}) \right) d\mathbf{x} \\ &= \langle T \rangle + \langle V \rangle. \end{aligned} \quad (1.3.2)$$

This is applicable in all dimensions. Note that we have used the divergence theorem ( $\int$  by parts in 1D) and so the surface term must vanish.

### Example

Consider the quartic oscillator in scaled units:

$$H = -\frac{d^2}{dx^2} + x^4$$



Can solve for the eigenstates numerically. In 1D use Given's procedure, for example, which is basic approach of the CATAM project 5.3. I found the energies, in ascending

order, to be (2 decimal places) 1.06, 3.80, 7.46, 11.64, ... Since the potential is symmetric The states are alternately even and odd parity, with the ground state even (this is always the case).

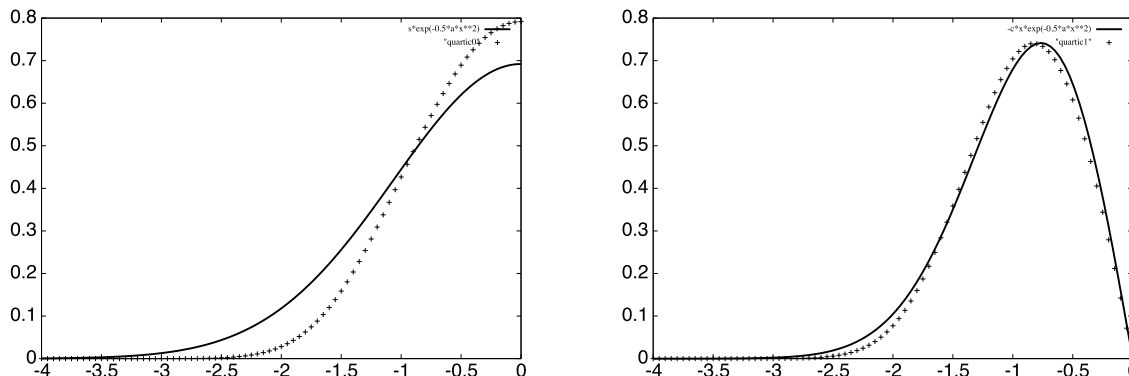
Use normalized trial wavefunction

$$\psi(x) = \left(\frac{a}{\pi}\right)^{1/4} e^{-ax^2/2} \quad (1.3.3)$$

and get

$$\begin{aligned} \langle E \rangle &= \int \left( \left( \frac{d\psi}{dx} \right)^2 + x^4 \psi^2 \right) dx \\ &= \frac{a}{2} + \frac{3}{4a^2}. \end{aligned} \quad (1.3.4)$$

The minimum of  $\langle E \rangle$  occurs at  $a = 3^{1/3}$  giving the estimate for the ground-state energy  $E_0 = 1.08$ , which is less than 2% larger (it is always larger) than the true value. The variational and true wavefunctions for  $\psi_0, \psi_1$  are



## 1.4 Further Results

- (1) To estimate  $E_1$  we can use the fact that  $\psi_1$  has odd parity and so use trial wavefunction

$$\psi = \left(\frac{4a^3}{\pi}\right)^{1/4} x e^{-ax^2/2}. \quad (1.4.1)$$

This is already a bit long-winded to work out; I used MAPLE and tried other trial wavefunctions as well, but none so good as the oscillator. The estimate is  $E_1 = 3.85$ , which is rather good. The variational and correct wavefunctions are shown above.

In general, it is hard to pick out the excited states by clever choice of  $\psi$ . Here, we used parity to get  $E_1$  because  $V(x)$  is symmetric under reflection. Even then it is not obvious how to get  $E_2$  etc. We need, for example, to choose  $\psi$  with even parity and know that we **exactly** have  $\langle \psi | \psi_0 \rangle = 0$ .

- (2) **Lower bound on  $E_0$ .**

Clearly,  $\langle |H| \rangle > \min V$ , so  $\min V$  is a lower bound on  $E_0$ .

(3) **Virial Theorem.**

Let the potential  $V(\mathbf{x})$  be a homogeneous function of degree  $n$ ; i.e.,

$$V(\lambda\mathbf{x}) = \lambda^n V(\mathbf{x}), \quad \text{in } D \text{ dimensions.} \quad (1.4.2)$$

Let  $\psi_0(\mathbf{x})$  be the true ground state, not necessarily normalized, and assumed real. Then

$$\begin{aligned} E_0 &= \frac{\int \left( \frac{\hbar^2}{2m} \nabla\psi_0(\mathbf{x}) \cdot \nabla\psi_0(\mathbf{x}) + V(\mathbf{x})\psi_0^2(\mathbf{x}) \right) d^D x}{\int \psi_0^2(\mathbf{x}) d^D x} \\ &= \langle T \rangle_0 + \langle V \rangle_0. \end{aligned} \quad (1.4.3)$$

Now consider  $\psi(\mathbf{x}) = \psi_0(\alpha\mathbf{x})$  as a trial wavefunction. Then

$$\langle E \rangle = \alpha^2 \langle T \rangle_0 + \alpha^{-n} \langle V \rangle_0. \quad (1.4.4)$$

*Check:*

$$\begin{aligned} \langle V \rangle &= \frac{\int V(\mathbf{x})\psi_0^2(\alpha\mathbf{x}) d^D x}{\int \psi_0^2(\alpha\mathbf{x}) d^D x} = \alpha^{-n} \frac{\int V(\alpha\mathbf{x})\psi_0^2(\alpha\mathbf{x}) d^D x}{\int \psi_0^2(\alpha\mathbf{x}) d^D x} \\ &= \alpha^{-n} \frac{\int V(\mathbf{y})\psi_0^2(\mathbf{y}) d^D y}{\int \psi_0^2(\mathbf{y}) d^D y} = \alpha^{-n} \langle V \rangle_0, \end{aligned} \quad (1.4.5)$$

and similarly for the kinetic term, where the kinetic operator has  $n = -2$ .

The minimum of  $\langle E \rangle$  is clearly at  $\alpha = 1$  where the result is the exact ground state energy value. Hence, must have

$$2\alpha \langle T \rangle_0 - n\alpha^{-n-1} \langle V \rangle_0 = 0 \quad \text{at } \alpha = 1, \quad (1.4.6)$$

and thus we find

$2\langle T \rangle_0 = n\langle V \rangle_0 \quad \text{The Virial Theorem.} \quad (1.4.7)$
----------------------------------------------------------------------------------------------

Equivalently,

$$E_0 = \left(1 + \frac{2}{n}\right) \langle T \rangle_0 = \left(1 + \frac{n}{2}\right) \langle V \rangle_0. \quad (1.4.8)$$

**Examples:**

(i) The **harmonic oscillator** has  $n = 2$ , and so

$$\langle V \rangle_0 = \langle T \rangle_0 = \frac{1}{2} E_0. \quad (1.4.9)$$

(ii) The **coulomb potential** has  $n = -1$ , and so

$$\langle V \rangle_0 = -2\langle T \rangle_0 \Rightarrow E_0 = -\langle T \rangle_0 \quad \text{negative and so a bound state.} \quad (1.4.10)$$

(iii) The potential  $V(r) = 1/r^3$ , which has  $n = -3$ . This is relevant in  $D = 3$  when the orbital angular momentum is zero:  $l = 0$ . Then find

$$E_0 = \left(1 - \frac{2}{3}\right) \langle T \rangle_0 > 0. \quad (1.4.11)$$

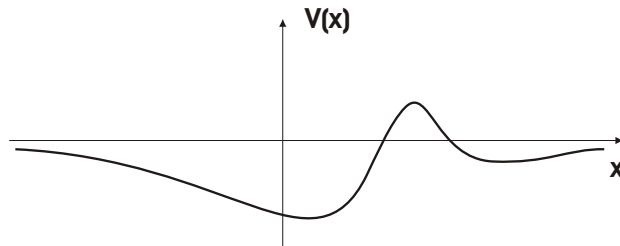
This is a contradiction since we assumed that there **was** a bound state; i.e., a state with normalizable wavefunction. In fact, there are no bound states and the particle falls to the centre.

## 2 Bound States and Scattering States in $D = 1$

Consider the stationary Schrödinger equation in  $D = 1$ :

$$-\frac{\hbar^2}{2m} \frac{d^2}{dx^2} \psi + V(x)\psi = E\psi, \quad (2.1)$$

where  $V(x) \rightarrow 0$  as  $x \rightarrow \pm\infty$ .



The time-dependence of a stationary state of energy  $E$  is  $e^{-i\omega t}$  with  $\omega = E/\hbar$ .

A **bound state** has a negative energy  $E = -\hbar^2\kappa^2/2m$ ,  $\kappa > 0$  and it is described by a normalizable wavefunction

$$\psi(x) \sim \begin{cases} a e^{-\kappa x} & x \rightarrow \infty \\ a e^{\kappa x} & x \rightarrow -\infty \end{cases}. \quad (2.2)$$

To obtain the bound state solutions we impose this asymptotic behaviour as a boundary condition. Generically, a solution that is exponentially growing from the left will continue to grow exponentially to the right; bound state solutions are special and discrete. The particle is localized in the neighbourhood of the origin and the probability for finding it at position  $x$  when  $|x| \rightarrow \infty$  is exponentially small.

A **scattering state** in the same potential has positive energy  $E = \hbar^2k^2/2m$ ,  $k > 0$ . The asymptotic behaviour of a scattering state can be classified for  $x \rightarrow \pm\infty$  as follows:

$x \rightarrow \infty$

$$\psi(x) \sim \begin{cases} a e^{ikx} & \text{right moving, **outgoing/emitted** wave} \\ a e^{-ikx} & \text{left moving, **incoming/incident** wave.} \end{cases} \quad (2.3)$$

$x \rightarrow -\infty$

$$\psi(x) \sim \begin{cases} a e^{ikx} & \text{right moving, **incoming/incident** wave,} \\ a e^{-ikx} & \text{left moving, **outgoing/emitted** wave.} \end{cases} \quad (2.4)$$

The momentum operator is  $p = -i\hbar d/dx$  and so the momenta for  $e^{\pm ikx}$  are  $\pm\hbar k$ . Really, the particles are to be thought of as wave packets which are made of a superposition of waves with wave vectors taking values in  $(k - \Delta k, k + \Delta k)$ ; the particles are then localized. This does not materially affect the analysis using the idealized system of pure plane waves.

Why are we concerned with the properties of the scattering wavefunction as  $|x| \rightarrow \infty$ ? It is because we fire a projectile from far away (far enough away for the influence of the potential to be negligible) into the region where the potential is non-zero. We then observe how the particle is deflected by observing the emitted particle trajectory long after the scattering (long on the time-scale of the interaction) and so again far from the region of influence of the potential. If we think of the neighbourhood of the origin as a black box whose properties we probe using projectiles and studying how they scatter in this way, then we can probe the properties of the system (i.e., the potential) located in the region of the origin. This, after all, is how Rutherford discovered the nucleus at the centre of the atom and how we know that quarks exist as point-like objects in elementary particles such as the proton, neutron, pion etc. Indeed, quarks were originally a group-theoretical mathematical device for building the ‘‘periodic table’’ of the many elementary (actually not so elementary) particles. It was only in the 1960s that it was mooted (by Dalitz and others) that they were real and then in the 1970s that their effects were manifest in scattering experiments.

## 2.1 Scattering for particle incident from left

For each  $k$  there is a solution for  $\psi$  with no incoming wave from the right; this a standard solution familiar in 1D calculations for reflection and transmission from a potential. A second, independent, solution has no incoming wave from the left (see later). In the former case we have

$$\psi(x) \sim \begin{cases} e^{ikx} + r e^{-ikx} & x \rightarrow -\infty \\ t e^{ikx} & x \rightarrow \infty \end{cases} \quad (2.1.1)$$

$$\begin{aligned} \text{The reflection probability is} & \quad R = |r|^2 \\ \text{The transmission probability is} & \quad T = |t|^2 \end{aligned} \quad (2.1.2)$$

To recap, recall that from the Schrödinger equation and its complex conjugate we can show, for real  $V$  and  $E$  (i.e., a stationary state), that

$$\begin{aligned} \frac{dj(x)}{dx} &= 0, & j(x) &= -i \frac{\hbar}{2m} \left( \psi^*(x) \frac{d\psi(x)}{dx} - \psi(x) \frac{d\psi^*(x)}{dx} \right) \\ &\Rightarrow j(x) \text{ is constant,} & & \end{aligned} \quad (2.1.3)$$

where  $j(x)$  is the probability current. This is equivalent to realizing that the Wronskian for the two independent solutions  $\text{Re}(\psi)$  and  $\text{Im}(\psi)$  is constant since there is no first-order derivative term in the Schrödinger equation.

For large -ve  $x$

$$\begin{aligned} j(x) &= (e^{-ikx} + r^* e^{ikx}) \frac{\hbar k}{2m} (e^{ikx} - r e^{-ikx}) + \text{complex conjugate} \\ &= \frac{\hbar k}{m} (1 - |r|^2) \end{aligned} \quad (2.1.4)$$

For large +ve  $x$

$$j(x) = \frac{\hbar k}{m} |t|^2 \quad (2.1.5)$$

Thus,

$$1 - |r|^2 = |t|^2 \quad \Rightarrow \quad R + T = 1. \quad (2.1.6)$$

This shows that probability is conserved: the scattering is **unitary**. Note that  $r, t, R, T$  are functions of  $k$  and hence also of  $E$ .

## 2.2 Scattering for particle incident from right

For each  $k$  there is a solution for  $\psi$  with no incoming wave from the left. This is the parity reversed situation to the familiar one discussed above. We need not solve again from scratch; indeed we can recover the solution from what has already been done. The Schrödinger equation is real, and so can take the complex conjugate of the solution  $\psi(x)$  of the previous section (2.1) and get another solution with asymptotic behaviour

$$\psi^*(x) \sim \begin{cases} e^{-ikx} + r^* e^{ikx} & x \rightarrow -\infty \\ t^* e^{-ikx} & x \rightarrow \infty \end{cases} \quad (2.2.1)$$

Yet another solution is  $\tilde{\psi}(x) = \psi^*(x) - r^* \psi(x)$  with asymptotic behaviour

$$\tilde{\psi}(x) \sim \begin{cases} (1 - |r|^2) e^{-ikx} & x \rightarrow -\infty \\ t^* e^{-ikx} - r^* t e^{ikx} & x \rightarrow \infty \end{cases} \quad (2.2.2)$$

Since  $tt^* = 1 - |r|^2$ , I can write this scattering state normalized to standard form as

$$\psi_L(x) \sim \begin{cases} t e^{-ikx} & x \rightarrow -\infty \\ e^{-ikx} + r' e^{ikx} & x \rightarrow \infty, \end{cases} \quad (2.2.3)$$

This has the particle incident from the right, i.e. **Left-moving**, and then reflected and transmitted with amplitudes for reflection and transmission (use subscript "L" on  $\psi_L$  and prime superscript to signify quantities associated with scattering of incident **Left** moving particle.)

$$r' = -\frac{r^* t}{t^*}, \quad t' = \frac{1 - |r|^2}{t^*} = \frac{T}{t^*} = t \quad \text{the transmission amplitudes are } \mathbf{the\ same.} \quad (2.2.4)$$



Then we find the reflection and transmission probabilities are

$$\begin{aligned} R' &= \frac{|r^*t|^2}{|t|^2} = |r|^2 = R && \text{same as for particle incident from left,} \\ T' &= T && \text{also same as for particle incident from left.} \end{aligned} \quad (2.2.5)$$

Clearly,  $r'$  and  $r$  differ only by an overall phase factor, and  $t' = t$ . Note that the potential  $V$  need not be symmetric about the origin (symmetric here means an even function).

If  $V$  is **symmetric** then  $V$  commutes with the parity operator  $Pf(x) = f(-x)$ :  $[P, V] = 0$  and hence so does the Hamiltonian  $H = p^2/2m + V(x)$ :  $[P, H] = 0$ , and the eigenstates of  $H$ , including the scattering states discussed here, can be chosen as simultaneous eigenstate of  $H$  and  $P$ . The eigenvalues of  $P$  are  $\pm 1$  since

- (a)  $P$  is hermitian and so has real eigenvalues,
- (b)  $P\psi(x) = \lambda\psi(x)$  and  $P^2\psi(x) = \psi(x) \Rightarrow \lambda^2 = 1$ .

Thus, the simultaneous eigenvalues are ( $E = k^2/2m, \lambda = \pm 1$ ).

In the case that  $[P, V] = 0$  it is clear that  $r' = r$  and  $t' = t$  since  $\psi(-x)$  of section (2.1) is also a solution but with left and right interchanged.

Note that the equation for  $r'$  can be written as


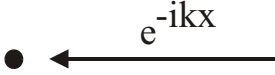
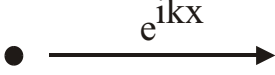
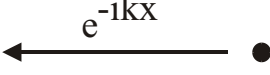
$$r't^* + r^*t = 0, \quad (2.2.6)$$

and for a symmetric potential this is

$$rt^* + r^*t = 0 \Rightarrow \text{Re}(rt^*) = 0. \quad (2.2.7)$$

### 2.3 The S-matrix

In the previous two sections I defined two different scattering wavefunctions which I shall call  $\psi_R, \psi_L$  signifying that the incident particle is **R**ight-moving and **L**eft-moving, respectively. These are two independent complex solutions for the Schrödinger equation with positive energy. Define

Incoming, Right-moving wave: $I_R(k, x) = e^{ikx}, x \rightarrow -\infty$	
Incoming, Left-moving wave: $I_L(k, x) = e^{-ikx}, x \rightarrow \infty$	
Outgoing, Right-moving wave: $O_R(k, x) = e^{ikx}, x \rightarrow \infty$	
Outgoing, Left-moving wave: $O_L(k, x) = e^{-ikx}, x \rightarrow -\infty$	

We can then write our two solutions in matrix form

$$\begin{pmatrix} \psi_R \\ \psi_L \end{pmatrix} = \begin{pmatrix} I_R \\ I_L \end{pmatrix} + \begin{pmatrix} t & r \\ r' & t \end{pmatrix} \begin{pmatrix} O_R \\ O_L \end{pmatrix}. \quad (2.3.1)$$

The matrix in this equation is the **S-matrix**:

$$\mathbf{S} = \begin{pmatrix} t & r \\ r' & t \end{pmatrix}. \quad (2.3.2)$$

This is in the basis of right and left moving waves denoted  $(R, L)$  basis. Conservation of probability implies that  $\mathbf{S}$  is unitary:

$$\mathbf{S}\mathbf{S}^\dagger = \begin{pmatrix} t & r \\ r' & t \end{pmatrix} \begin{pmatrix} t^* & r'^* \\ r^* & t^* \end{pmatrix} = \begin{pmatrix} |t|^2 + |r|^2 & tr'^* + rt^* \\ r't^* + tr^* & |r'|^2 + |t|^2 \end{pmatrix} = \begin{pmatrix} 1 & 0 \\ 0 & 1 \end{pmatrix}, \quad (2.3.3)$$

where results from the earlier section have been used including eqn. (2.2.6).

When  $V = 0$  then  $\mathbf{S} = \mathbb{I}$ , the unit matrix. The solutions then are

$$\begin{pmatrix} \psi_R \\ \psi_L \end{pmatrix} = \begin{pmatrix} I_R + O_R \\ I_L + O_L \end{pmatrix} = \begin{pmatrix} e^{ikx} \\ e^{-ikx} \end{pmatrix}, \quad (2.3.4)$$

i.e., unscattered right- and left-moving plane waves described by  $r = r' = 0$ ,  $t = 1$ .

Another way to write the solutions in this  $(R, L)$  basis is to emphasize the departure from these non-scattering solutions which is caused by the scattering. After all, this is what we detect as being the non-trivial effect of the scattering potential. We rewrite eqn. (2.3.1) as

$$\begin{pmatrix} \psi_R \\ \psi_L \end{pmatrix} = \begin{pmatrix} e^{ikx} \\ e^{-ikx} \end{pmatrix} + (\mathbf{S} - \mathbb{I}) \begin{pmatrix} O_R \\ O_L \end{pmatrix}. \quad (2.3.5)$$

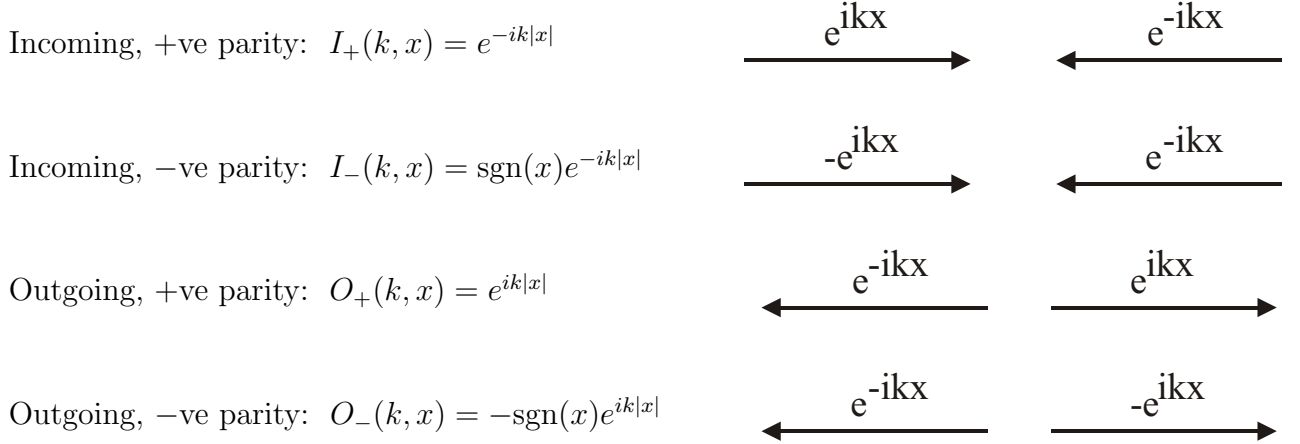
It is usual to define the **T-matrix** by  $\mathbf{T} = \mathbf{S} - \mathbb{I}$ , and then  $\mathbf{T} = \mathbf{0}$  means there is no scattering:

$$\mathbf{T} = \begin{pmatrix} t - 1 & r \\ r' & t - 1 \end{pmatrix}. \quad (2.3.6)$$

## 2.4 Bound states and the $\mathbf{S}$ -matrix

It is useful to reformulate the expression for the scattering states discussed above in order to highlight different features that are physically important. This will act as a paradigm for the way in which scattering in  $D = 3$  is analyzed and allows the basic concepts to be demonstrated. In particular, we shall generally assume that there are one or more conserved quantum numbers other than  $E$ . In 1D this will be parity which is relevant for symmetric potentials  $V(x)$ .

We shall consider incoming and outgoing waves that are eigenstates of parity, labelled by  $\pm$  for even/odd parity, respectively, as well as the wavevector  $k$  and consequently also by energy  $E$ . This is just a different basis choice and is a linear combination of the  $(R, L)$  basis states:



We have that

$$\begin{pmatrix} I_+ \\ I_- \end{pmatrix} = \underbrace{\begin{pmatrix} 1 & 1 \\ -1 & 1 \end{pmatrix}}_{\mathbf{A}} \begin{pmatrix} I_R \\ I_L \end{pmatrix}, \quad \begin{pmatrix} O_+ \\ O_- \end{pmatrix} = \begin{pmatrix} 1 & 1 \\ -1 & 1 \end{pmatrix} \begin{pmatrix} O_R \\ O_L \end{pmatrix} \quad (2.4.1)$$

If there is no scattering potential the incoming particles pass through the origin without suffering any modification and become outgoing particles. The +ve(-ve) parity steady-state wave functions that describes this process are thus

$$\begin{aligned} \psi_+(k, x) &= I_+(k, x) + O_+(k, x) = e^{ikx} + e^{-ikx}, \\ \psi_-(k, x) &= I_-(k, x) + O_-(k, x) = -e^{ikx} + e^{-ikx}. \end{aligned} \quad (2.4.2)$$

When a scattering potential  $V(x)$  is present the incoming wave is unaffected, it has yet to encounter the scattering centre, but the outgoing wave is modified. Indeed, if  $V(x)$  is not symmetric then an incoming wave of given parity can scatter and produce both +ve and -ve parity outgoing waves. We can then write the scattering wavefunctions in matrix form using the S-matrix:

$$\begin{pmatrix} \psi_+ \\ \psi_- \end{pmatrix} = \begin{pmatrix} I_+ \\ I_- \end{pmatrix} + \mathbf{S}^{(P)} \begin{pmatrix} O_+ \\ O_- \end{pmatrix}, \quad (2.4.3)$$

where  $\mathbf{S}^{(P)}$  is the S-matrix in the parity basis:

$$\mathbf{S}^{(P)} = \begin{pmatrix} S_{++} & S_{+-} \\ S_{-+} & S_{--} \end{pmatrix} = \mathbf{A} \mathbf{S} \mathbf{A}^{-1} = \begin{pmatrix} t + (r+r')/2 & (r-r')/2 \\ (r'-r)/2 & t - (r+r')/2 \end{pmatrix}. \quad (2.4.4)$$

The unitarity of  $\mathbf{S}^{(P)}$  follows directly from the unitarity of  $\mathbf{S}$ ; the relation between them is a similarity transformation.

The important case is when  $V$  is symmetric:  $[P, V] = 0$ . Then  $r' = r$  and  $\mathbf{S}^{(P)}$  is diagonal:

$$\mathbf{S}^{(P)} = \begin{pmatrix} t+r & 0 \\ 0 & t-r \end{pmatrix}, \quad (2.4.5)$$

and parity is conserved in the scattering process; a +ve(-ve) incoming state scatters only into a +ve(-ve) outgoing state. Clearly, unitarity of  $\mathbf{S}^{(P)}$  in this case means

$$\begin{aligned} |S_{++}|^2 &= |S_{--}|^2 = 1 \Rightarrow \\ S_{++} &= t+r = e^{2i\delta_+}, \quad S_{--} = t-r = e^{2i\delta_-}. \end{aligned} \quad (2.4.6)$$

Here  $\delta_{\pm}$  encode the phase shifts of the **outgoing** waves  $O_{\pm}$  with respect to the case of **no scattering**. Thus,  $\delta_{\pm} \neq 0$  signifies the occurrence of scattering and they are all we need to know to describe and quantify the process.

Consider the example of scattering from the square well potential

$$V(x) = \begin{cases} -V_0 & |x| < a/2 \\ 0 & |x| > a/2 \end{cases} \quad (2.4.7)$$

The transmission ( $t$ ) and reflection ( $r$ ) amplitudes are given by

$$t = \frac{2ikq e^{-ika}}{D(k)}, \quad r = \frac{(k^2 - q^2) \sin qa e^{-ika}}{D(k)}$$

$$\text{where } D(k) = 2ikq \cos qa + (k^2 + q^2) \sin qa, \quad q^2 = k^2 + \frac{2mV_0}{\hbar^2}. \quad (2.4.8)$$

We set  $\alpha = qa/2$  and then can write the denominator  $D$  as

$$\begin{aligned} D(k) &= 2ikq(\cos^2 \alpha - \sin^2 \alpha) + (k^2 + q^2)2 \sin \alpha \cos \alpha \\ &= 2 \cos^2 \alpha (q \tan \alpha + ik)(q - ik \tan \alpha) \end{aligned} \quad (2.4.9)$$

Now  $S_{++} = t + r$  and  $S_{--} = t - r$  and the numerators of these expressions are

$$\begin{aligned} N_{\pm}(k) &= (2ikq \pm (k^2 - q^2) \sin qa) e^{-ika} = (2ikq \pm 2(k^2 - q^2) \sin \alpha \cos \alpha) e^{-ika} \\ &= 2 \cos^2 \alpha (q \tan \alpha \mp ik)(ik \tan \alpha \mp q) e^{-ika}. \end{aligned} \quad (2.4.10)$$

Thus, after all the algebra we find that

$$S_{++} = -e^{-ika} \frac{(q \tan \alpha - ik)}{(q \tan \alpha + ik)} \equiv \frac{f_+^*(k)}{f_+(k)} = \frac{f_+(-k)}{f_+(k)}, \quad (2.4.11)$$

$$S_{--} = e^{-ika} \frac{(q + ik \tan \alpha)}{(q - ik \tan \alpha)} \equiv \frac{f_-^*(k)}{f_-(k)} = \frac{f_-(-k)}{f_-(k)}, \quad (2.4.12)$$

These expressions are both unitary since they are the ratios of a complex expression and its complex conjugate.

The important feature is that, as a function of  $k$ , both  $S_{++}(k)$  and  $S_{--}(k)$  have a pole at imaginary value of  $k$  and an associated zero in the complex conjugate position. We examine the meaning using the example of scattering of a +ve parity wave on the well.

We have

$$\psi_+(k, x) = I_+(k, x) + S_{++}(k)O_+(k, x). \quad (2.4.13)$$

We now observe that we can analytically continue  $I_+$  and  $O_+$  in the complex  $k$ -plane and note for  $k = -i\kappa$  that  $I_+(-i\kappa, x)$  **decays** exponentially in both left and right regions, and similarly for  $O_+(i\kappa, x)$ :

$$I_+(-i\kappa, x) = O_+(i\kappa, x) = e^{-\kappa|x|}$$



However, the state  $\psi_+(k, x)$  is **still** a solution of the Schrödinger equation for these values of  $k : k = \mp i\kappa$ . In the special case that  $S_{++}$  in eqn. (2.4.13) has a **zero** at  $k = -i\kappa$  then the first term, the term with  $I_+(-i\kappa, x)$ , is all that is left and the state has only the exponentially decaying contribution.

$$\psi_+(-i\kappa, x) \sim e^{-\kappa|x|}. \quad (2.4.14)$$

Because of the form of  $S_{++}(k)$  we expect that if  $S_{++}$  has a zero at  $k = -i\kappa$  then it will have a pole at  $k = i\kappa$ . Then in eqn. (2.4.13) the second term, the term with  $O_+(i\kappa, x)$ , dominates the first term and, for the properly normalized state, again

$$\psi_+(i\kappa, x) \sim e^{-\kappa|x|}. \quad (2.4.15)$$

In the case here the zero(pole) are at  $k = -i\kappa(i\kappa)$  where from eqn. (2.4.11)

$$\kappa = q \tan qa/2 \quad \text{remember} \quad \alpha = qa/2, \quad q^2 + \kappa^2 = \frac{2mV_0}{\hbar^2}. \quad (2.4.16)$$

The solutions for  $\kappa$  are indeed the solutions for the +ve parity bound states of the square well. A similar result holds for the -ve parity states and  $S_{--}$ .

These are certainly bound state solutions and so we have the very important result for potentials  $V(x)$  that vanish sufficiently fast as  $|x| \rightarrow \infty$ :

Let  $V(x)$  be a potential such that  $V(x) \rightarrow 0$  for  $|x| \rightarrow \infty$ . Then to each bound state state of  $V$ ,  $\phi(\kappa, x) \sim \exp(-\kappa|x|)$   $|x| \rightarrow \infty$ , there is an associated zero of the S-matrix  $\mathbf{S}(k)$  on the negative imaginary  $k$  axis at  $k = -i\kappa$ , and a corresponding pole on the positive imaginary  $k$ -axis at  $k = i\kappa$ .

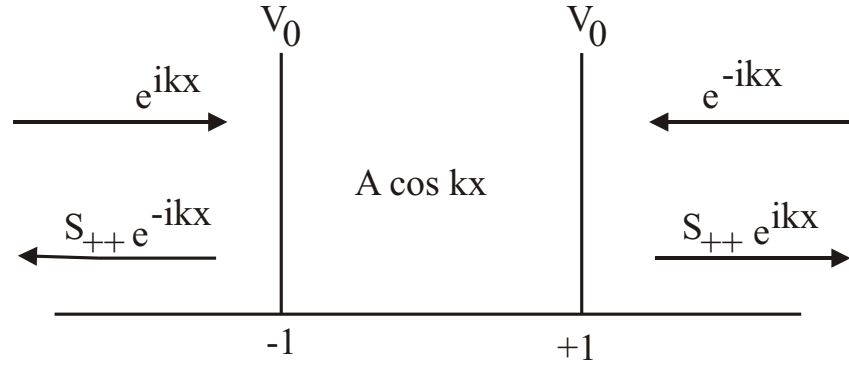
**Caveat:** the inverse statement is not always true. Not every zero(pole) of  $\mathbf{S}$  corresponds to a bound state. This will only be the case if the potential  $V(x)$  is localized, by which is meant essentially that, as  $|x| \rightarrow \infty$ ,  $V$  falls off faster than any exponential. This is true for any potential which is zero outside some neighbourhood of the origin or, for example, for a potential decaying like a Gaussian function at large  $|x|$ . This is true for the foregoing analysis where we have only demonstrated the result for localized  $V$ ; we could then identify the **exact** solutions to be plane-waves outside the range of  $V$ . This needs more effort if  $V$  is not localized.

The analytic properties of  $S(k)$  in the complex  $k$ -plane are important in the analysis of scattering.

## 2.5 Resonance states and the S-matrix

We will look at another important scattering result: the effect of states that are quasisustainable/metastable. We examine this by an example. Consider the potential consisting of two delta functions of equal strength,  $V_0$ , at  $x = \pm 1$ .

$$V(x) = V_0\delta(x - 1) + V_0\delta(x + 1). \quad (2.5.1)$$



Here is shown the scattering of the +ve parity partial wave:  $I_+(k, x)$  scatters into  $O_+(k, x)$ . A similar diagram for the negative parity waves has  $\psi(x) = A \sin kx$  in  $-1 < x < 1$ . The boundary conditions are that  $\psi$  is continuous and

$$\text{Disc } \frac{d\psi}{dx} \Big|_{x=-1} = V_0 \psi, \quad \text{Disc } \frac{d\psi}{dx} \Big|_{x=1} = V_0 \psi. \quad (2.5.2)$$

Carry out the matching calculation in the usual way but now only need to match at **one** boundary,  $x = 1$  say, since parity ensures the boundary conditions are satisfied at the other boundary. (see example sheet). We consider only the +ve parity waves to demonstrate the result. We get

$$S_{++} = e^{-2ik} \left[ \frac{(2k - iV_0)e^{ik} - iV_0e^{-ik}}{(2k + iV_0)e^{-ik} + iV_0e^{ik}} \right]. \quad (2.5.3)$$

This is clearly unitary as it is the ratio of a function and its conjugate.

- (1) For  $V_0 \rightarrow \infty$  with  $k$  finite we find

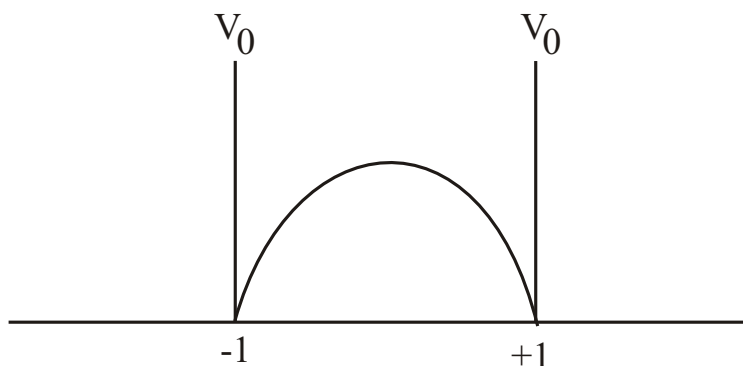
$$S_{++} \rightarrow -e^{-2ik}. \quad (2.5.4)$$

This is to be expected since it corresponds to pure reflection off an impenetrable barrier. The “-” sign is the standard change of phase on reflection and the phase factor is there because the wave is reflected rather than passing through and hence has travelled a distance  $\Delta x = 2$  less far.

- (2) Consider the pole positions of  $S_{++}$ . These are at

$$e^{2ik} = - \left( 1 - \frac{2ik}{V_0} \right). \quad (2.5.5)$$

For  $k/V_0 \rightarrow 0$  (i.e.  $V_0 \rightarrow \infty$ ) the solutions are  $k = (n + 1/2)\pi$ . These correspond to the symmetric bound states in the interior region  $-1 < x < 1$ . Consider just  $n = 0$  from now on. This state looks like:



Now consider the pole position for  $V_0$  finite but still  $V_0/k \gg 1$ . We expect it to be close to the bound state pole positions. Take example with  $n = 0$  and propose

$$k = \frac{\pi}{2} + \alpha - i\gamma. \quad (2.5.6)$$

We expect  $\alpha, \gamma$  to vanish as  $V_0 \rightarrow \infty$  and will find that a power series in  $1/V_0$  will suffice. We need to solve

$$e^{i\pi} e^{2(i\alpha+\gamma)} = - \left(1 - \frac{2ik}{V_0}\right) \Rightarrow e^{2(i\alpha+\gamma)} = \left(1 - \frac{2ik}{V_0}\right). \quad (2.5.7)$$

After some algebra find

$$\alpha = -\frac{\pi}{2V_0} + \frac{\pi}{2V_0^2}, \quad \gamma = \frac{\pi^2}{4V_0^2}. \quad (2.5.8)$$

[Note, it is easier to solve after realizing that  $\gamma$  is  $O(1/V_0^2)$ .]

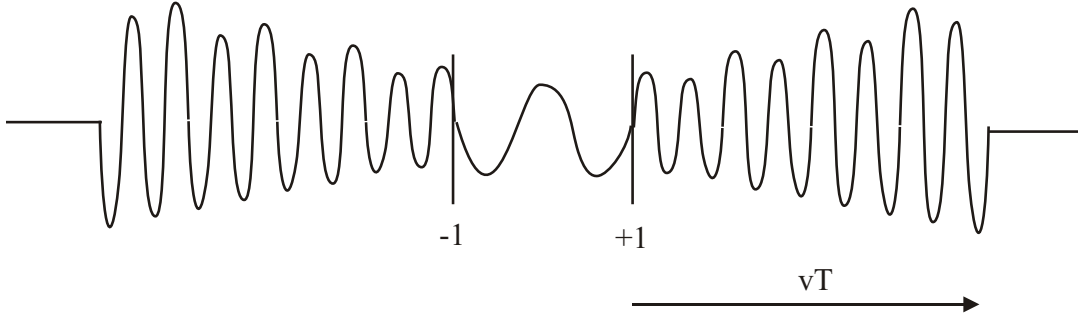
Thus, the pole is at a **complex** value of momentum and lies in the lower-half of the complex  $k$ -plane. Write  $k = p - i\gamma$  with  $p = \pi/2 + \alpha$  and  $\gamma > 0$ . There is, of course, a zero at the conjugate point. What does all this signify?

- (i) The state inside the potential region is no longer bound but is quasistable and once established only leaks out very slowly as long as  $V_0$  is large.
- (ii) The wavefunction continued to the pole value for  $k$  is dominated by  $O_+(k)$  for  $|x| > 1$ :

$$\psi_+(k, x) \sim e^{ip|x|} e^{\gamma|x|}. \quad (2.5.9)$$

I.e., at a fixed time the wavefunction **increases** with  $|x|$ . Suppose we have put the particle into  $-1 < x < 1$  and it occupies a state of energy  $E$ . This is not an eigenstate since it eventually escapes by tunnelling. However, if  $V_0$  is large it will be close to one of the stationary states (here we chose the ground state).

Suppose this happened at  $t = -T$ ; it is like an excited atom which will eventually decay. The particle is said to be in a metastable or **quasi-stationary** state. Radioactive decay is described by similar systems. As  $t$  increases the particle leaks out to  $\infty$  and at  $t = 0$  the wavefunction looks like



Here  $v$  is the particle velocity. The wavefunction is bigger at larger  $|x|$  since there was a larger particle current at early times and it has travelled further by  $t = 0$ . The wavefunction, of course, is zero for  $|x| > vT$  and the whole state is still normalized.

The complex energy is given by  $E_c = k^2/2m$  and we find

$$E_c \sim E_0 - \frac{1}{2}i\Gamma, \quad (2.5.10)$$

where

$$E_0 = \frac{p^2}{2m} \quad \text{and is very close to the bound state energy,}$$

$$\Gamma = \frac{2p\gamma}{m} \quad \text{and } \Gamma > 0. \quad (2.5.11)$$

The time dependence of the state is then

$$e^{-iE_c t/\hbar} = e^{-iE_0 t/\hbar} e^{-\Gamma t/2\hbar}. \quad (2.5.12)$$

I.e., at **fixed**  $x$  the state decays with characteristic time  $\tau = 1/\Gamma$ ; this controls the half-life of the state and  $\Gamma$  is called the width of the state. (Note that the probability is proportional to  $|\psi^2|$  and so decays with  $\exp(-\Gamma t)$ .)

As a function of energy then  $S_{++}$  will have the form

$$S_{++} \sim \frac{E - E_0 - \frac{1}{2}i\Gamma}{E - E_0 + \frac{1}{2}i\Gamma}. \quad (2.5.13)$$

The quasi-stationary state is also called **a resonance** and in general the S-matrix has this characteristic form when  $E$  is near to  $E_0$ .

## 2.6 Properties of $\mathbf{S}(k)$

- (1)  $\mathbf{S}\mathbf{S}^\dagger = \mathbb{I}$ : probability conservation means  $\mathbf{S}$  is **unitary**. If  $\mathbf{S}$  is diagonal then  $S_{\alpha\beta}(k) = e^{2i\delta_\alpha(k)}\delta_{\alpha\beta}$  (do not confuse notation using “ $\delta$ ” twice here).
- (2) Complex conjugation  $*$  and  $k \rightarrow -k$  have the same effect on the incoming and outgoing states:  $I_+ \leftrightarrow O_+$ ,  $I_- \leftrightarrow -O_-$ . Thus,

$$\psi^*(k) = \psi(-k) \implies \mathbf{S}^*(k) = \mathbf{S}(-k). \quad (2.6.1)$$

For diagonal  $\mathbf{S}$  this implies  $\delta_\alpha(-k) = -\delta_\alpha(k)$ ; the phase shifts are **odd** functions of  $k$ .

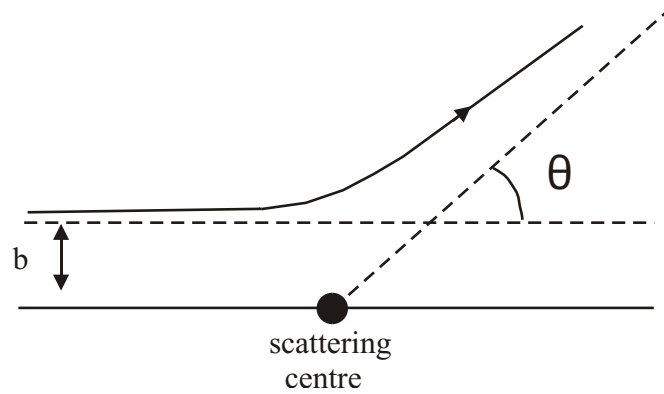


### 3 Classical Scattering in $D = 3$

Scattering of particles is used to probe the general structure of matter. It reveals the constituent particles composing matter (such as atoms, nuclei and quarks), determines their sizes, the characteristic length scales of structures (such as the lattice spacing in a crystal) and the nature of the forces which act. In the previous section we have established most of the mathematical features of scattering but in 3D there are generalizations of these ideas.

#### 3.1 The Scattering Cross-section

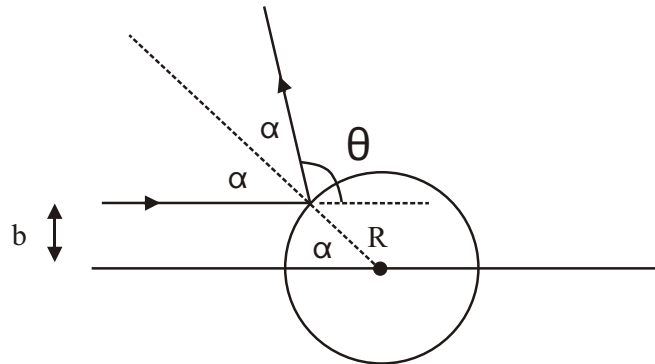
First we define the **impact parameter**  $b$  and the **scattering angle**  $\theta$ :



The scattering angle is the angle between the asymptotic trajectories at late and early times and the impact parameter is the closest distance of approach **if** the particle were to suffer no scattering. We will ignore recoil and assume azimuthal symmetry at least. The trajectory is then planar.

We shall calculate or measure  $\theta(b)$  or, better,  $b(\theta)$ .

**Example of hard sphere:**



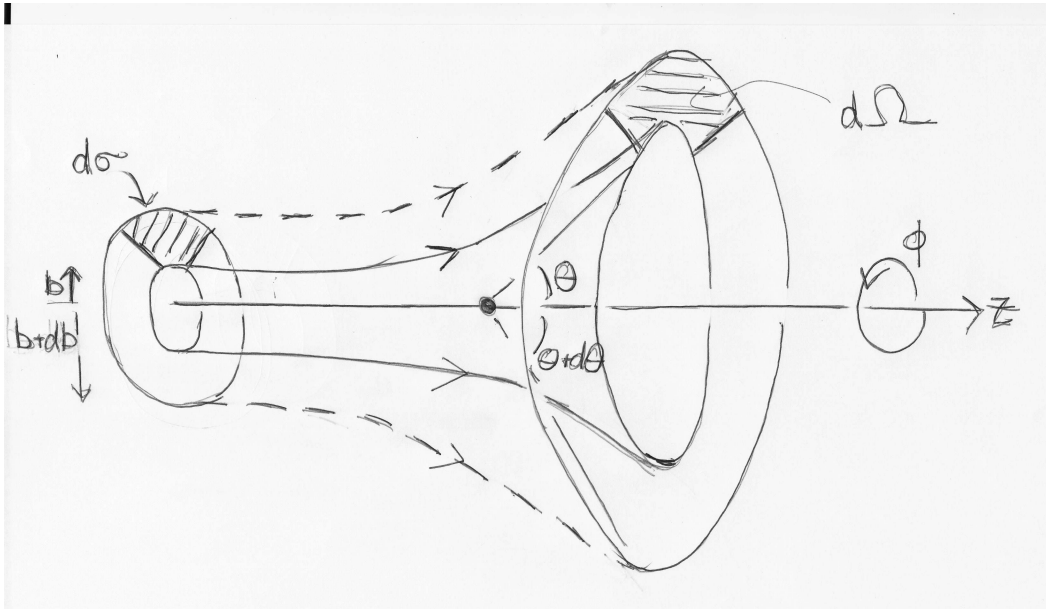
Here

$$\begin{aligned} b &= R \sin \alpha, \quad \theta = \pi - 2\alpha \implies \\ b &= R \sin \left( \frac{\pi}{2} - \frac{\theta}{2} \right) = R \cos \frac{\theta}{2}. \end{aligned} \quad (3.1.1)$$

There is no scattering if  $b \geq R$ .

### Idea of the Cross-section:

The cross-section is a measure of the size of the scattering centre presented to the incoming beam. As its name suggests it is in units of (metres)<sup>2</sup> although the natural unit in atomic/nuclear/particle physics is the **barn** =  $10^{-28}m^2$  and a more usual version is the nanobarn ( $nb$ ) =  $10^{-9}b$ . For classical scattering this is a simple idea but in quantum mechanics the scattering cross-section generally varies strongly with the energy of the incoming beam and can be particularly large for those energies corresponding to resonance poles as were discussed in the previous section. The full calculation also takes into account diffraction effects which are absent classically. The picture which explains how the cross-section is defined for both classical and quantum scattering is



Consider infinitesimal cross-sectional area  $d\sigma$  of incident beam that scatters into infinitesimal solid angle  $d\Omega$ . Geometrically

$$d\sigma = b db d\phi, \quad d\Omega = \sin \theta d\theta d\phi. \quad (3.1.2)$$

Note,  $d\phi$  is the same in both cases if we have azimuthal symmetry. Then

$$\text{the differential cross-section is } D(\theta) = \left| \frac{d\sigma}{d\Omega} \right| = \frac{b}{\sin \theta} \left| \frac{db}{d\theta} \right|. \quad (3.1.3)$$

$D(\theta)$  has units of area.

**Hard sphere:**

$$\begin{aligned} \frac{db}{d\theta} &= -\frac{R}{2} \sin \frac{\theta}{2} \implies \\ D(\theta) &= \frac{\left(R \cos \frac{\theta}{2}\right) \left(\frac{R}{2} \sin \frac{\theta}{2}\right)}{\sin \theta} = \frac{R^2}{4}. \end{aligned} \quad (3.1.4)$$

The **total cross-section**,  $\sigma$ , is

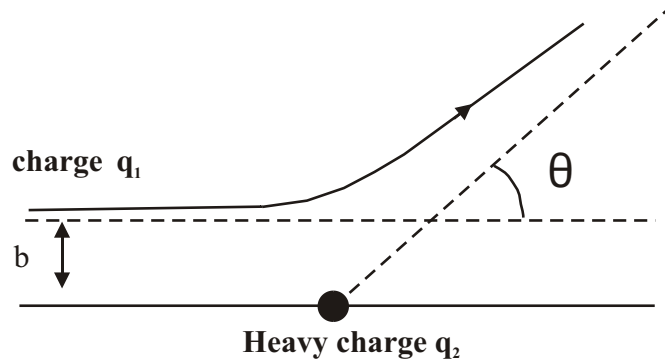
$$\sigma = \int D(\theta) d\Omega = 2\pi \int_{-1}^1 D(\theta) d \cos \theta. \quad (3.1.5)$$

$\sigma$  is the total area of the beam that is scattered. For the hard sphere scattering

$$\sigma = \frac{R^2}{4} 4\pi = \pi R^2, \quad (3.1.6)$$

i.e., the geometrical area presented to the beam.

**Coulomb (Rutherford) scattering:**



Beam particles have kinetic energy  $E$ . Orbit theory gives

$$b = \frac{q_1 q_2}{8\pi\epsilon_0 E} \cot \frac{\theta}{2}, \quad (3.1.7)$$

and hence the differential cross-section is

$$D(\theta) = \left| \frac{d\sigma}{d\Omega} \right| = \left( \frac{q_1 q_2}{16\pi\epsilon_0 E} \right)^2 \frac{1}{(\sin \theta/2)^4}. \quad (3.1.8)$$

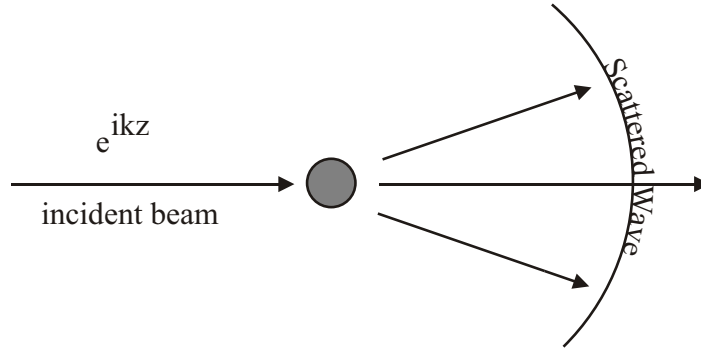
The total cross-section is infinite. This arises because the coulomb, inverse square, force is of infinite range and is special. Indeed, it has to be dealt with very carefully in general. The infinity arises because the beam is idealized as being of infinite transverse extent whereas, in practice, no beam is like this; in QM the particles are in wavepackets. This is one case where the idealization goes wrong. However, it is only relevant to very small scattering angles which are never observed in practice.

## 4 Quantum Scattering in 3D

The target is described by the fixed potential  $V(\mathbf{r})$ ,  $V \rightarrow 0$  as  $r \rightarrow \infty$  ( $r = |\mathbf{r}|$ ) and the scattering is described by the wavefunction  $\psi(\mathbf{r})$  satisfying the Schrödinger equation

$$\left[ -\frac{\hbar^2}{2m} \nabla^2 + V(\mathbf{r}) \right] \psi(\mathbf{r}) = E\psi(\mathbf{r}), \quad (4.1)$$

with  $E > 0$ . The analysis follows a similar path to that already discussed for scattering in 1D but with some important differences. We look for a stationary (time-independent) description of the scattering visualized as



This is a steady state with continuous incident beam and an outgoing scattered spherical wave. The appropriate boundary condition for  $\psi(\mathbf{r})$  as  $r \rightarrow \infty$  is

$$\psi(\mathbf{r}) \sim \underbrace{e^{ikz}}_{\text{incident wave}} + \underbrace{f(\hat{\mathbf{r}}) \frac{e^{ikr}}{r}}_{\text{scattered wave}}. \quad (4.2)$$

The probability current is

$$\mathbf{j}(\mathbf{r}) = -i \frac{\hbar}{2m} (\psi^* \nabla \psi - \psi \nabla \psi^*), \quad \text{with } \nabla \cdot \mathbf{j} = 0. \quad (4.3)$$

For

$$\psi = \psi_{in} = e^{ikz} : \quad \mathbf{j}_{in} = \frac{\hbar k}{m} \mathbf{v}. \quad (4.4)$$

Note, one particle per unit volume in the beam. For

$$\begin{aligned} \psi &= \psi_{scatt} = f(\hat{\mathbf{r}}) \frac{e^{ikr}}{r} : \quad \nabla \psi \sim ik f(\hat{\mathbf{r}}) \frac{e^{ikr}}{r} \hat{\mathbf{r}} + O(r^{-2}) \implies \\ \mathbf{j}_{scatt} &= \frac{\hbar k}{m} \frac{1}{r^2} |f(\hat{\mathbf{r}})|^2 \hat{\mathbf{r}} + O(r^{-3}) \end{aligned} \quad (4.5)$$

Interference terms (not shown) between the incident and scattered wave arise as a consequence of the idealization of using plane waves rather than wavepackets. Can construct a beam of finite transverse extent using superposition without materially

affecting the scattering amplitude; the incident beam and scattered particles are then separated and no interference at large  $r$  occurs. So:

$$\begin{aligned} \text{The **scattered** flux into element } d\Omega \text{ of solid angle} &= \frac{\hbar k}{m} |f(\hat{\mathbf{r}})|^2 d\Omega \\ \text{The **incident** flux per unit area} &= \frac{\hbar k}{m}. \end{aligned} \quad (4.6)$$

We then have

$$\begin{aligned} d\sigma &= \frac{\text{scattered flux into } d\Omega}{\text{incident flux per unit area}} \implies \\ \frac{d\sigma}{d\Omega} &= |f(\theta, \phi)|^2. \end{aligned} \quad (4.7)$$

$f(\theta, \phi)$  is called the **scattering amplitude**. If  $V$  is spherically symmetric,  $V(\mathbf{r}) = V(r)$ , then  $f$  is independent of  $\phi$ .

## 4.1 Partial wave analysis and phase shifts

We have seen many of the ideas earlier. In the 1D case we had partial waves  $I_{\pm}$  and  $O_{\pm}$  labelled by parity, and for symmetric  $V$  the S-matrix was parametrized by phase-shifts,  $\delta_{\pm}$  for each partial wave. In 3D, for spherically symmetric  $V$ , the angular momentum  $l = 0, 1, 2, \dots$  is a good quantum number. The partial waves will be labelled by  $l$  and the S-matrix parametrized by  $\delta_l$ . Wish to solve

$$\left[ -\frac{\hbar^2}{2m} \nabla^2 + V(r) \right] \psi(\mathbf{r}) = E\psi(\mathbf{r}) \quad (4.1.1)$$

subject to

$$\psi(\mathbf{r}) \sim e^{ikz} + f(\theta) \frac{e^{ikr}}{r}, \quad r \rightarrow \infty. \quad (4.1.2)$$

Make the **partial wave expansion**

$$\psi(\mathbf{r}) = \sum_{l=0}^{\infty} R_l(r) P_l(\cos \theta). \quad (4.1.3)$$

The Legendre polynomials,  $P_l(u)$  satisfy

$$\frac{d}{du}(1-u^2) \frac{d}{du} P_l(u) + l(l+1) P_l(u) = 0, \quad (4.1.4)$$

and are **angular momentum** wavefunctions; this PDE is simply

$$\mathbf{L}^2 P_l = \hbar^2 l(l+1) P_l. \quad (4.1.5)$$

Then Schrödinger's equation is

$$\frac{d^2}{dr^2}(rR_l) + \left( k^2 - \frac{l(l+1)}{r^2} - U(r) \right) rR_l = 0, \quad (4.1.6)$$

where

$$E = \frac{\hbar^2 k^2}{2m}, \quad U(r) = \frac{2m}{\hbar^2} V(r). \quad (4.1.7)$$

For a short-range potential (the only kind we shall consider for the time being) as  $r \rightarrow \infty$  we get

$$\frac{d^2}{dr^2}(rR_l) + k^2(rR_l) = 0. \quad (4.1.8)$$

This equation has two independent solutions for  $R_l(r)$ :

$$\frac{e^{-ikr}}{r} \quad \text{and} \quad \frac{e^{ikr}}{r}, \quad (4.1.9)$$

i.e., respectively, **ingoing** and **outgoing** spherical waves. These are the 3D analogues of the ingoing and outgoing plane waves in the 1D case.

#### 4.1.1 Partial wave expansion for $e^{ikz}$

When  $U = 0$ ,  $\psi = e^{ikz} \equiv e^{ikr \cos \theta}$  is also a solution, and the corresponding radial equation  $\forall r$  is

$$\frac{d^2}{d\rho^2}(\rho R_l) + \left(1 - \frac{l(l+1)}{\rho^2}\right) \rho R_l = 0, \quad (4.1.1.1)$$

with  $\rho = kr$ . Thus can write

$$e^{ikr \cos \theta} = \sum_l (2l+1) u_l(kr) P_l(\cos \theta), \quad (4.1.1.2)$$

where the factor of  $(2l+1)$  is for convenience, and  $u_l(\rho)$  satisfies eqn (4.1.1.1). Now

$$\int_{-1}^1 P_l(u) P_m(u) du = \frac{2}{(2l+1)} \delta_{lm}, \quad (4.1.1.3)$$

and hence

$$2u_l(\rho) = \int_{-1}^1 e^{i\rho u} P_l(u) du. \quad (4.1.1.4)$$

$\rho \rightarrow \infty$

Integrate by parts:

$$2u_l(\rho) = \left[ \frac{e^{i\rho u} P_l(u)}{i\rho} \right]_{-1}^1 - \frac{1}{i\rho} \int_{-1}^1 e^{i\rho u} P_l'(u) du. \quad (4.1.1.5)$$

Have  $P_l(1) = 1$ ,  $P_l(-1) = (-1)^l$  and so

$$u_l(\rho) = \frac{e^{i\rho} - (-1)^l e^{-i\rho}}{2i\rho} + O(\rho^{-2}), \quad (4.1.1.6)$$

where a further integration by parts shows that the integral is  $O(\rho^{-2})$ . This may be rewritten as

$$u_l(\rho) \sim i^l \frac{\sin\left(\rho - \frac{1}{2}l\pi\right)}{\rho} \quad \rho \rightarrow \infty. \quad (4.1.1.7)$$

Then for  $\rho \rightarrow \infty$

$$e^{ikz} = \sum_{l=0}^{\infty} (2l+1) i^l \frac{\sin\left(kr - \frac{1}{2}l\pi\right)}{kr} P_l(\cos\theta). \quad (4.1.1.8)$$

$\rho \rightarrow 0$

Since  $P_n(u)$  is a polynomial of degree  $n$  we can write the monomial

$$u^l = \frac{l!}{(2l-1)!!} P_l(u) + \sum_{m<l} c_m P_m(u). \quad (4.1.1.9)$$

Then

$$\begin{aligned} 2u_l(\rho) &= \int_{-1}^1 \underbrace{\left(1 + \dots + \frac{(i\rho u)^l}{l!} + \dots\right)}_{\exp(i\rho u)} P_l(u) du \\ &= \frac{(i\rho)^l}{l!} \frac{2l!}{(2l+1)!!} + O(\rho^{l+2}) \implies u_l(\rho) \sim \frac{i^l \rho^l}{(2l+1)!!} \implies \\ e^{ikz} &\sim \sum_{l=0}^{\infty} \frac{i^l (kr)^l}{(2l-1)!!} P_l(\cos\theta). \end{aligned} \quad (4.1.1.10)$$

The solutions to eqn. (4.1.1.1) are the **spherical Bessel functions**  $j_l(\rho), n_l(\rho)$  with  $j_l(\rho)$  regular at  $\rho = 0$ . From the previous analysis we identify  $u_l(\rho) = i^l j_l(\rho)$  which **defines**  $j_l(\rho)$ .

Because there is no first-order term in eqn. (4.1.1.1) the Wronskian is a constant and we define  $W(\rho j_l(\rho), \rho n_l(\rho)) = 1$ . This determines  $n_l(\rho)$  and its asymptotic behaviour. We then have

$\rho \rightarrow \infty$

$$j_l(\rho) \sim \frac{\sin\left(\rho - \frac{1}{2}l\pi\right)}{\rho}, \quad n_l(\rho) \sim -\frac{\cos\left(\rho - \frac{1}{2}l\pi\right)}{\rho}. \quad (4.1.1.11)$$

$\rho \rightarrow 0$

$$j_l(\rho) \sim \frac{\rho^l}{(2l+1)!!}, \quad n_l(\rho) \sim -(2l-1)!! \rho^{-(l+1)}. \quad (4.1.1.12)$$

The full solutions are

$$j_l(x) = (-x)^l \left(\frac{1}{x} \frac{d}{dx}\right)^l \frac{\sin x}{x}, \quad n_l(x) = -(-x)^l \left(\frac{1}{x} \frac{d}{dx}\right)^l \frac{\cos x}{x}. \quad (4.1.1.13)$$

In particular,

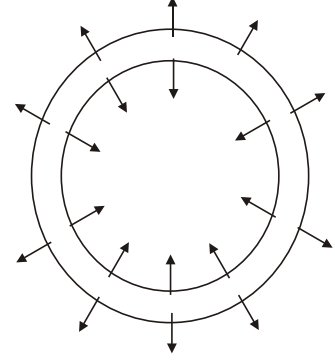
$$\begin{aligned} j_0(x) &= \frac{\sin x}{x}, & j_1(x) &= \frac{\sin x}{x^2} - \frac{\cos x}{x}, \\ n_0(x) &= -\frac{\cos x}{x}, & n_1(x) &= -\frac{\cos x}{x^2} - \frac{\sin x}{x}. \end{aligned} \quad (4.1.1.14)$$

### 4.1.2 Partial wave expansion for scattering states

For  $U(r) = 0$  there is no scattering and for  $r \rightarrow \infty$  we have

$$e^{ikz} \sim \sum_{l=0}^{\infty} \frac{2l+1}{2ik} \left[ \frac{e^{ikr}}{r} - (-1)^l \frac{e^{-ikr}}{r} \right] P_l(\cos \theta). \quad (4.2.1.1)$$

In a given summand the first(second) term is an **outgoing(ingoing)** spherical wave of angular momentum  $l$ ; these are the partial waves each labelled by  $l$ . They are the 3D analogues of the parity partial waves in 1D scattering. We can view the plane wave as a superposition of **ingoing** and **outgoing** spherical waves.



The waves **interfere** to produce the unscattered beam. For each  $l$  we see an ingoing spherical wave which passes through the origin and emerges as an outgoing spherical wave; it is analogous to sum of the parity ingoing and outgoing waves of given parity in 1D.

**For  $U(r) \neq 0$  there is scattering:**

- (i) We expect only the outgoing waves to be modified; the ingoing waves have not yet encountered the target.
- (ii) Since  $l$  is a good quantum number it is not changed by the scattering; each **partial wave** scatters **independently**.
- (iii) Conservation of probability (particle number) implies that each outgoing wave of given  $l$  is modified by a **phase** only. This is identical to the situation with the symmetric potential in 1D.

Thus expect, as  $r \rightarrow \infty$ ,

$$\begin{aligned} \psi(\mathbf{r}) &\sim \sum_{l=0}^{\infty} \frac{2l+1}{2ik} \left[ e^{2i\delta_l} \frac{e^{ikr}}{r} - (-1)^l \frac{e^{-ikr}}{r} \right] P_l(\cos \theta) \\ &= e^{ikz} + \sum_{l=0}^{\infty} \left( \frac{2l+1}{2ik} \right) (e^{2i\delta_l} - 1) P_l(\cos \theta) \frac{e^{ikr}}{r}. \end{aligned} \quad (4.2.1.2)$$

Note here that the S-matrix,  $\mathbf{S}$ , has entries  $S_{l'l'}$  for a general potential but that in the spherically symmetric case it is diagonal as is, therefore, the T-matrix  $\mathbf{T} = \mathbf{S} - \mathbb{I}$ :

$$S_{l'l'} = e^{2i\delta_l} \delta_{l'l'}, \quad T_{l'l'} = (e^{2i\delta_l} - 1) \delta_{l'l'}, \quad (4.2.1.3)$$



where  $\delta_l$  is a function of  $k$ . By comparing with eqn. (4.2) we identify the scattering amplitude

$$f(\theta) = \frac{1}{k} \sum_{l=0}^{\infty} (2l+1) f_l P_l(\cos \theta), \quad f_l = e^{i\delta_l} \sin \delta_l. \quad (4.2.1.4)$$

The  $f_l$  are the **partial wave** scattering amplitudes. From eqn. (4.7) we have

$$\frac{d\sigma}{d\Omega} = \frac{1}{k^2} \sum_{l,l'} (2l+1)(2l'+1) f_l f_{l'}^* P_l(\cos \theta) P_{l'}(\cos \theta) \implies \quad (4.2.1.5)$$

$$\sigma = \frac{4\pi}{k^2} \sum_l (2l+1) \sin^2 \delta_l. \quad (4.2.1.6)$$

### 4.1.3 The optical theorem

From eqn. (4.2.1.4) we see immediately that

$$\text{Im } f(0) = \frac{1}{k} \sum_l (2l+1) \sin^2 \delta_l. \quad (4.3.1.1)$$

Thus, we obtain the **optical theorem**

$$\sigma = \frac{4\pi}{k} \text{Im } f(0). \quad (4.3.1.2)$$

### 4.1.4 Solving for the asymptotic scattered wave

From eqn. (4.2.1.2), for  $r \rightarrow \infty$

$$\psi(\mathbf{r}) \sim \sum_{l=0}^{\infty} \frac{(2l+1)}{2ik} e^{i\delta_l} \frac{\sin(kr - \frac{1}{2}l\pi + \delta_l)}{kr} P_l(\cos \theta). \quad (4.4.1.1)$$

The task is to solve the Schrödinger equation, identify this asymptotic form and hence calculate the  $\delta_l$ . Must therefore solve

$$\frac{d^2}{dr^2}(rR_l) + \left( k^2 - \frac{l(l+1)}{r^2} - U(r) \right) rR_l = 0, \quad (4.4.1.2)$$

where  $U(r) = 2mV(r)/\hbar^2$ , with boundary conditions that

- (i)  $R_l(r)$  is regular at  $r = 0$ ;
- (ii)  $rR_l(r) \sim B_l \sin(kr - \frac{1}{2}l\pi + \delta_l)$  as  $r \rightarrow \infty$ .

We suppose that  $V(r)$  is negligible beyond a finite range  $r = a$  (in our examples we shall choose it to be zero for large enough  $r$ ), although the formalism is fine as long as  $V \rightarrow 0$  faster than  $1/r$  as  $r \rightarrow \infty$ . We note the asymptotic behaviours of the spherical Bessel functions  $j_l(r)$  and  $n_l(r)$  discussed earlier, see eqn. (4.1.1.11). Then for  $r > a$  we will have

$$R_l(r) = B_l (j_l(\rho) \cos \delta_l(k) - n_l(\rho) \sin \delta_l(k)). \quad (4.4.1.3)$$

The boundary condition is that  $R_l(r)$  and  $dR_l(r)/dr$  are continuous at  $r = a$ . Solve the Schrödinger equation

$$\frac{d^2}{dr^2}(rR_l) + \left( k^2 - \frac{l(l+1)}{r^2} - U(r) \right) rR_l = 0, \quad (4.4.1.4)$$

for  $r < a$  and  $U = 2mV/\hbar^2$ . Define  $\gamma_l(ka) = aR_l'(a)/R_l(a)$  for  $r - a = 0^-$  (i.e., just inside the well): this is the logarithmic derivative and is dimensionless. Then the matching condition is

$$\frac{ka(j_l'(ka) \cos \delta_l - n_l'(ka) \sin \delta_l)}{j_l(ka) \cos \delta_l - n_l(ka) \sin \delta_l} = \gamma_l(ka) \implies \quad (4.4.1.5)$$

$$\tan \delta_l(k) = \frac{\gamma_l(ka)j_l(ka) - ka j_l'(ka)}{\gamma_l(ka)n_l(ka) - ka n_l'(ka)}. \quad (4.4.1.6)$$

If  $V(r)$  does not vanish for  $r > a$  then eqn. (4.4.1.4) must be solved for two solutions which behave as  $r \rightarrow \infty$ , respectively, as ingoing and outgoing spherical waves. The solution for  $\psi(\mathbf{r})$  will be a linear combination of the two solutions whose boundary condition is that it behaves asymptotically as in eqn. (4.2.1.2). Then can determine the phase-shifts  $\delta_l(k)$ .

#### 4.1.5 Low-energy scattering

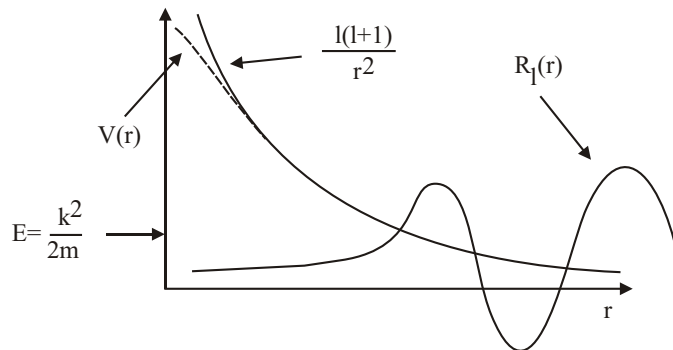
In the low energy limit we take  $k$  small. By this mean, for example,  $ka \rightarrow 0$ . In this limit we expect  $\gamma_l(ka) \rightarrow \text{constant}$  and in eqn. (4.4.1.6) we can replace the Bessel functions by their approximate behaviour for small argument (see eqn. (4.1.1.12))

$$j_l(x) \sim x^l, \quad n_l(x) \sim x^{-(l+1)} \implies \tan \delta_l(k) \sim (ka)^{2l+1}. \quad (4.5.1.1)$$

We thus deduce that

$$\delta_l(k) \sim (ka)^{2l+1}(1 + O(k^2)) \quad (4.5.1.2)$$

It is instructive to understand physically why behaviour of this sort is to be expected. In eqn. (4.4.1.4) the potential is made up of two pieces:  $U(r)$  and the centrifugal barrier  $-l(l+1)/r^2$  which acts to **repel** penetration of the particle to the origin where  $U(r)$  is appreciable. For low energy  $E \sim k^2$  the particle simply does not have enough energy to tunnel significantly to the region where it encounters  $U(r)$  and so the scattering is weak and weakens as  $l$  increases.



Another way to see this from a classical perspective is that the angular momentum is  $\hbar k b$  where  $b$  is the impact parameter. Then,  $l \sim kb \implies b \sim l/k$ , and  $b$  is related to the closest distance of approach. If  $b > a$  then the particle never (classically) enters the region of influence of  $V(r)$  and does not scatter; this corresponds to  $ka < l$ .

For small  $k$  the  $l = 0$ , S-wave, contribution is the only one that is not negligible and its contribution dominates the cross-section. We write

$$\delta_0 = -a_s k + O(k^3), \quad (4.5.1.3)$$

and from the formula for  $\sigma$ , eqn. (4.2.1.6), we find that the low-energy cross-section is

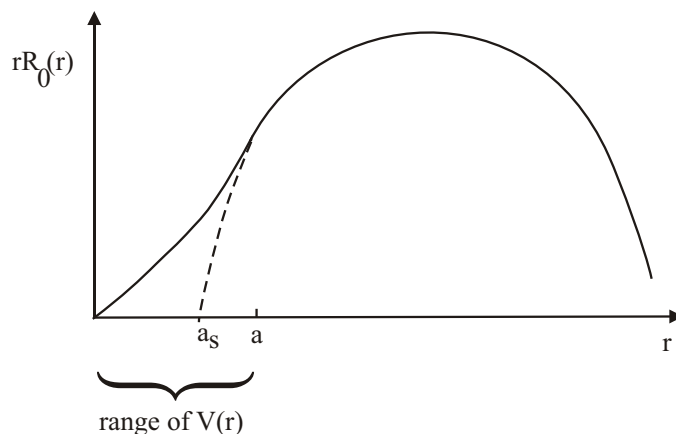
$$\sigma \approx \sigma_0 = 4\pi a_s^2. \quad (4.5.1.4)$$

$a_s$  is called **the scattering length** and can be positive, negative and under certain circumstances it can diverge as a function of parameters in the potential.

We must have  $rR_0(r) \rightarrow 0$  as  $r \rightarrow 0$ , and for  $r > a$  we have (exactly)

$$R_0(r) = B_0 \left( \frac{e^{i(kr - 2ka_s)}}{r} - \frac{e^{-ikr}}{r} \right). \quad (4.5.1.5)$$

Clearly, this function has a zero at  $r = a_s$ . So  $rR_0(r)$  looks like



This shows that the sign of  $a_s$  is related to the curvature of the wavefunction inside  $r < a$ .

## 4.2 Examples

### 1. Scattering off a hard sphere.

The potential is

$$U(r) = \begin{cases} \infty & r < a, \\ 0 & r > a, \end{cases} \quad (4.2.1)$$

with boundary conditions

$$\psi(r) = \begin{cases} 0 & r \leq a \\ \text{continuous} & r = a. \end{cases} \quad (4.2.2)$$

For  $r > a$ ,  $R_l(r)$  takes the form in eqn. (4.4.1.3) and so the boundary condition at  $r = a$  means

$$R_l(a) = B_l (j_l(ka) \cos \delta_l - n_l(ka) \sin \delta_l) = 0 \quad \Longrightarrow \quad \tan \delta_l = \frac{j_l(ka)}{n_l(ka)}. \quad (4.2.3)$$

This determines the  $\delta_l$  and hence  $d\sigma/d\Omega$ .

For long wavelengths  $ka \ll 1$  and then find

$$\delta_l(k) \approx -\frac{(ka)^{2l+1}}{(2l+1)!!(2l-1)!!}, \quad (4.2.4)$$

with the **exact** result

$$\delta_0 = -ka. \quad (4.2.5)$$

Note that we have chosen  $\delta(0) = 0$  but, of course,  $\tan \delta = 0$  has solutions  $\delta = n\pi$  and the choice is a matter of convention. Thus, for  $k \rightarrow 0$

$$\begin{aligned} f(\theta) &\approx \sum_l \frac{(2l+1)}{k} \delta_l P_l(\cos \theta) \\ &= -\sum_l \frac{k^{2l} a^{2l+1}}{[(2l-1)!!]^2} P_l(\cos \theta) \\ &= -a - k^2 a^3 \cos \theta + O(k^4). \end{aligned} \quad (4.2.6)$$

From eqn. (4.2.5) we see that the scattering length is  $a_s = a$  and therefore that the low-energy cross-section is  $\sigma = 4\pi a^2$ . This is to be compared with the classical result derived earlier of  $\sigma = \pi a^2$ . The increase is due to diffraction effects.

### 1. S-wave scattering on a square well.

$$V(r) = \begin{cases} -V_0 & r < a \\ 0 & r > a. \end{cases} \quad U(r) = \frac{2mV(r)}{\hbar^2}, \quad \gamma^2 = \frac{2mV_0}{\hbar^2}. \quad (4.2.7)$$

For  $l = 0$  have wavefunction  $\psi(r) = u(r)/r$  where the radial Schrödinger equation is

$$u'' + k^2 u = 0 \quad r > a, \quad (4.2.8)$$

$$u'' + \kappa^2 u = 0 \quad r < a, \quad (4.2.9)$$

$$E = \frac{\hbar^2 k^2}{2m} \quad \kappa^2 = k^2 + \gamma^2. \quad (4.2.10)$$

$r < a$ :  $\psi(r)$  regular at origin  $\Longrightarrow u(r) = A \sin \kappa r$ .

$r > a$ :  $u(r) = B \sin(kr + \delta_0)$  where  $\delta_0$  is the S-wave ( $l = 0$ ) phase shift.

The boundary condition is that  $\frac{1}{\psi} \frac{d\psi}{dr}$ , or equivalently  $\frac{1}{u} \frac{du}{dr}$ , is continuous at  $r = a$ .

This gives

$$\begin{aligned} \frac{A \kappa \cos \kappa a}{A \sin \kappa a} &= \frac{B k \cos(ka + \delta_0)}{B \sin(ka + \delta_0)} \quad \Longrightarrow \\ \kappa \cot \kappa a &= k \cot(ka + \delta_0) \quad \text{or} \\ \frac{\tan(ka + \delta_0)}{ka} &= \frac{\tan \kappa a}{\kappa a}. \end{aligned} \quad (4.2.11)$$

$k \rightarrow 0$

$$\begin{aligned} \tan(ka + \delta_0) &\approx \frac{k}{\gamma \cot \gamma a} \\ \frac{\tan ka + \tan \delta_0}{1 + \tan ka \tan \delta_0} &\approx \frac{k}{\gamma \cot \gamma a} \implies \\ \tan \delta_0 &\approx \frac{ka(1 - \gamma a \cot \gamma a)}{\gamma a \cot \gamma a} + O(k^3). \end{aligned} \quad (4.2.12)$$

Then

$$\delta_0 = -a_s k + O(k^3) \quad (4.2.13)$$

gives

$$a_s = -\frac{(1 - \gamma a \cot \gamma a)}{\gamma a \cot \gamma a} a. \quad (4.2.14)$$

for the scattering length, with  $\sigma \approx 4\pi a_s^2$ .

#### 4.2.1 Higher partial waves in the square well

We use the theory developed in section 4.1.4. We need to compute  $\gamma_l = R_l'(a)/R_l(a)$  for the wavefunction in the well to perform the matching given in eqn. (4.4.1.6). The radial Schrödinger equation in the well,  $r < a$ , is

$$(rR_l)'' + \left(k^2 - \frac{l(l+1)}{r^2}\right)(rR_l) = 0, \quad (4.1.2.1)$$

and the solution is  $R_l(r) = A j_l(\kappa r)$  since  $R_l \rightarrow 0$  as  $r \rightarrow 0$ . Then the matching condition from eqn. (4.4.1.6) is

$$\tan \delta_l(k) = \frac{\gamma_l(ka)j_l(ka) - ka j_l'(ka)}{\gamma_l(ka)n_l(ka) - ka n_l'(ka)}, \quad \gamma_l = \frac{\kappa a j_l'(\kappa a)}{j_l(\kappa a)}. \quad (4.1.2.2)$$

As  $k \rightarrow 0$  have  $\gamma_l \rightarrow \text{const}$ ,  $j_l(ka) \sim (ka)^l$ ,  $n_l(ka) \sim (ka)^{-(l+1)}$  and, as before, get  $\delta_l \sim (ka)^{2l+1}$ . Thus the contribution to the cross-section at low  $k$  from the  $l$ -th partial wave is

$$\sigma_l \sim \frac{\sin^2 \delta_l}{k^2} \sim k^{4l}. \quad (4.1.2.3)$$

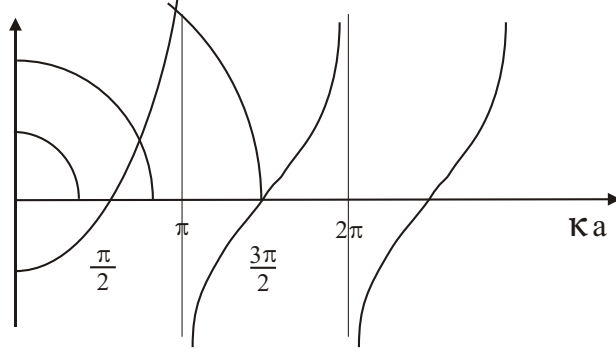
### 4.3 Influence of bound states

Solve for the bound states in the square well:

$$u(r) = \begin{cases} A \sin \kappa r & r < a \\ B e^{-\alpha r} & r > a \end{cases} \quad \alpha > 0 \quad (4.3.1)$$

Find the usual condition

$$-\kappa a \cot \kappa a = \alpha a = (\gamma^2 a^2 - \kappa^2 a^2)^{1/2} \quad \text{with} \quad E = -\frac{\hbar^2 \alpha^2}{2m}. \quad (4.3.2)$$



A new bound state appears whenever  $\gamma a = (n + \frac{1}{2})\pi$  where  $\cot \gamma a = 0$ , and then for  $\gamma a = (n + \frac{1}{2})\pi \pm \varepsilon$ ,  $\varepsilon > 0$

$$a_s = -\frac{(1 - \gamma a \cot \gamma a)}{\gamma a \cot \gamma a} a \xrightarrow{\varepsilon \rightarrow 0} \pm \infty. \quad (4.3.3)$$

- (i)  $a_s$  large and **negative**: new bound state not quite appeared;
- (ii)  $a_s$  large and **positive**: new, weakly bound, state has just appeared;
- (iii)  $\tan \delta_0 \rightarrow \pm \infty \implies \delta_0 = (n + \frac{1}{2})\pi$ . Thus, in both cases get a maximum contribution to  $\sigma$  from  $l = 0$ :

$$\sigma_0 = 4\pi/k^2. \quad (4.3.4)$$

Now

$$\begin{aligned} \tan(ka + \delta_0) &= \frac{ka}{\kappa a \cot \kappa a} \equiv f(k) \implies \\ S_0 &= e^{2i\delta_0} = e^{-2ika} \frac{1 + if(k)}{1 - if(k)}. \end{aligned} \quad (4.3.5)$$

$S_0$  is the diagonal entry in the S-matrix for  $l = 0$ . Thus  $S_0$  has a **pole** when  $f(k) = -i$  and has the associated **zero** at  $f(k) = i$ . Write  $k = i\alpha$ ,  $\alpha > 0$ , and then value of  $\alpha$  at the pole is given by the bound state formula eqn. (4.3.2). As in 1D, corresponding to each bound state, the S-matrix has a pole on the positive imaginary axis and associated zero on the negative imaginary axis for complex  $k$ .

A simple model for  $S$  is

$$S(k) = \frac{i\alpha + k}{i\alpha - k} = e^{2i\delta_0}. \quad (4.3.6)$$

Then for  $k \rightarrow 0$  find  $\delta_0 \approx -a_s k$  with  $a_s = 1/\alpha$ .

If  $\alpha$  is small and **negative** then the well is not quite deep enough for a new bound state to appear (need  $\alpha > 0$  for exponential decay as  $|x| \rightarrow \infty$ ) and  $a_s$  is large and **negative**.

If  $\alpha$  small and **positive** then have bound state near top of well and  $a_s$  large and **positive**;

In either case the S-wave cross-section is very big:  $\sigma_0 \sim 4\pi a_s^2$ . An example is low energy proton-neutron scattering where the deuteron (n-p) bound state is only lightly bound.

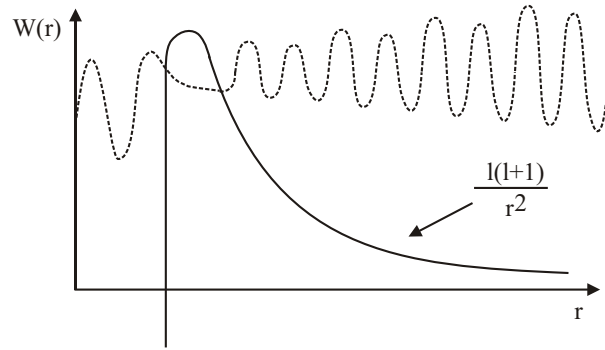
## 4.4 Resonance Poles

As in the example in 1D scattering, the S-matrix can have poles at complex energies which correspond to quasistable states or resonances. The pole will be at  $E = E_0 - i\frac{1}{2}\Gamma$  and the state has the properties:

- (i) it was prepared by some mechanism at a time far in the past when the particle was localized inside a high potential barrier. In  $D > 1$  this barrier can be created by the angular momentum term in the radial wave equation for  $l \neq 0$ , where the effective potential is (see eqn. (4.4.1.4))

$$W(r) = \underbrace{\frac{l(l+1)}{r^2}}_{\text{centrifugal barrier}} + U(r). \quad (4.4.1)$$

For a nucleus the potential  $U(r)$  is short-range and strongly attractive whereas the centrifugal barrier is repulsive. Then  $W(r)$  looks like



- (ii) the state is not a stationary state and so the particle tunnels through the barrier and “leaks” out to  $\infty$  as an outgoing spherical wave;
- (iii) The time-dependence of the state at fixed  $x$ , and especially inside the barrier, is

$$e^{-iE_0 t} e^{-\frac{1}{2}\Gamma t} \quad (4.4.2)$$

giving a decay-rate  $\Gamma$  for the probability of finding the particle at any fixed  $x$ ;

- (iv) These states can also be excited quark-model states in the scattering of two elementary particles or excited atomic states in the scattering of an electron on an atom.

Then

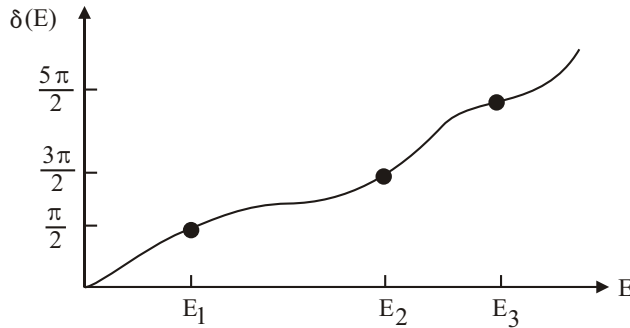
$$S(E) = e^{2i\delta} = \frac{E - E_0 - i\frac{1}{2}\Gamma}{E - E_0 + i\frac{1}{2}\Gamma} \quad (4.4.3)$$

and so

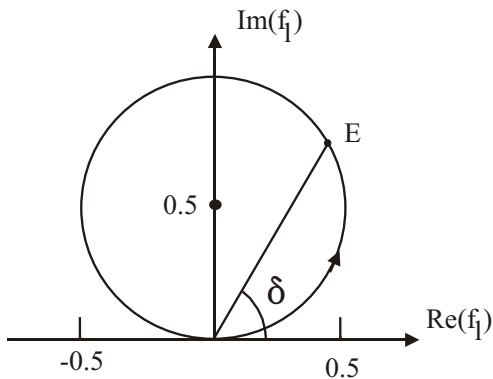
$$\begin{aligned} \cos 2\delta &= \frac{(E - E_0)^2 - \frac{1}{4}\Gamma^2}{(E - E_0)^2 + \frac{1}{4}\Gamma^2} \implies \\ \sin \delta &= \frac{\Gamma}{\sqrt{4(E - E_0)^2 + \Gamma^2}} \implies \sigma \approx \frac{4\pi}{k^2} \frac{\Gamma^2}{4(E - E_0)^2 + \Gamma^2} \end{aligned} \quad (4.4.4)$$

The cross-section has a bump at  $E = E_0$  of width  $\Gamma/2$  much like a damped harmonic oscillator near to the resonant frequency.

Note that  $\delta(E) = (n + 1/2)\pi$  and, as  $E$  increases, each time  $E$  “passes through” a resonance then  $n$  increases by unity. This is how resonances and excited states are detected.



An argand plot of the partial wave amplitude  $f_l(E) = e^{i\delta(E)} \sin \delta(E)$  vs  $E$  is a circle of unit radius centre  $0.5i$ . Here is a plot showing recent experimental P-wave ( $l = 1$ ) data. The first time the curve is on the **unitarity** circle and is the  $\Delta$  resonance of mass 1230MeV. For other trajectories probability has “leaked” away into undetected channels and so are within the circle but can still pinpoint  $\delta_1 = (n + 1/2)\pi$  in each case. It is rather messy in real life, though.



terminations.

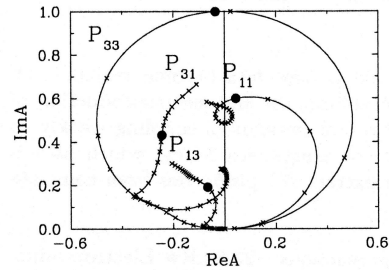


Fig. 2. Argand plots for P-partial-wave amplitudes from threshold (1080 MeV) to  $W = 2.5$  GeV.

Fig. 2

### 4.5 Green’s Functions

Use the **Green function** to analyse scattering processes. Will look for scattering state solutions to the Schrödinger equation

$$\left(-\frac{\hbar^2}{2m}\nabla^2 + V(\mathbf{r})\right)\psi(\mathbf{r}) = E\psi(\mathbf{r}). \tag{4.5.1}$$

Then

$$(\nabla^2 + k^2)\psi(\mathbf{r}) = U(\mathbf{r})\psi(\mathbf{r}), \quad U(\mathbf{r}) = \frac{2m}{\hbar^2}V(\mathbf{r}), \quad E = \frac{\hbar^2 k^2}{2m}. \tag{4.5.2}$$



Define the **free** or **non-interacting** Green function  $G_0$  by

$$(\nabla^2 + k^2) G_0(k; \mathbf{r}, \mathbf{r}') = \delta(\mathbf{r} - \mathbf{r}') . \quad (4.5.3)$$

By translation invariance we have  $G_0(k; \mathbf{r}, \mathbf{r}') = G_0(k; \mathbf{r} - \mathbf{r}')$  and so can define the Fourier transform by

$$\begin{aligned} \tilde{G}_0(k; \mathbf{q}) &= \int d^3x e^{-i\mathbf{q} \cdot \mathbf{x}} G_0(k; \mathbf{x}) \implies \\ G_0(k; \mathbf{x}) &= \int \frac{d^3q}{(2\pi)^3} e^{i\mathbf{q} \cdot \mathbf{x}} \tilde{G}_0(k, \mathbf{q}) . \end{aligned} \quad (4.5.4)$$

Then eqn. (4.5.3) becomes

$$\begin{aligned} (-q^2 + k^2) \tilde{G}_0(k; \mathbf{q}) &= 1 \implies \\ \tilde{G}_0(k; \mathbf{q}) &= -\frac{1}{q^2 - k^2} , \end{aligned} \quad (4.5.5)$$

where  $q^2 = |\mathbf{q}|^2$ . Hence,

$$G_0(k; \mathbf{r} - \mathbf{r}') = - \int \frac{d^3q}{(2\pi)^3} \frac{e^{i\mathbf{q} \cdot (\mathbf{r} - \mathbf{r}')}}{q^2 - k^2} . \quad (4.5.6)$$

This is a singular integral because of the poles on the real axis at  $q = k$ . This problem is resolved by introducing  $i\epsilon$  into the denominator, where  $\epsilon > 0$  is infinitesimal. This is a choice of boundary condition for the Green function  $G_0$ . [Remember that the Fourier transform of the  $\Theta$  (or Heavyside) functions  $\Theta(\pm t)$  differ simply by the sign of an  $\epsilon$  in the denominator:

$$\Theta(\pm t) = \int \frac{d\omega}{2\pi} \frac{e^{i\omega t}}{i\omega \pm \epsilon} .]$$

Then define

$$G_0^{(\pm)}(k; \mathbf{r} - \mathbf{r}') = - \int \frac{d^3q}{(2\pi)^3} \frac{e^{i\mathbf{q} \cdot (\mathbf{r} - \mathbf{r}')}}{q^2 - k^2 \mp i\epsilon} . \quad (4.5.7)$$

We are making a choice of how we must complete the contour: whether in UHP or LHP. This is determined by Jordan's lemma (remember  $\Theta(\pm t)$  example). We get that

$$G_0^{(\pm)}(k; \mathbf{r} - \mathbf{r}') = -\frac{1}{4\pi} \frac{e^{\pm ik|\mathbf{r} - \mathbf{r}'|}}{|\mathbf{r} - \mathbf{r}'|} . \quad (4.5.8)$$

The ambiguity occurs because we had not specified the **boundary conditions**  $G_0$  must have. For scattering theory we require solutions with **outgoing** spherical waves and so choose  $G_0^{(+)}$ .

**Check:**

For  $R \neq 0$

$$\nabla^2 \frac{e^{ikR}}{R} = \frac{1}{R} \frac{d^2}{dR^2} R \frac{e^{ikR}}{R} = -k^2 \frac{e^{ikR}}{R} \implies (\nabla^2 + k^2) \frac{e^{ikR}}{R} = 0 . \quad (4.5.9)$$

At  $R = 0$  have the usual result:

$$\nabla^2 \frac{1}{R} = -4\pi\delta(\mathbf{R}) . \quad (4.5.10)$$

So, putting the two together we get

$$(\nabla^2 + k^2) \frac{e^{ikR}}{R} = -4\pi\delta(\mathbf{R}) . \quad (4.5.11)$$

Can also use divergence theorem for sphere of infinitesimal radius about the origin.

#### 4.5.1 Integral equations

Using  $G_0^{(+)}$  we can replace the Schrödinger p.d.e together with the boundary conditions by a single integral equation which automatically incorporates the boundary conditions. We write eqn. (4.5.2) as

$$\psi(\mathbf{k}; \mathbf{r}) = \underbrace{e^{i\mathbf{k} \cdot \mathbf{r}}}_{\text{homog. soln.}} + \underbrace{\int d^3r' G_0^{(+)}(\mathbf{k}; \mathbf{r} - \mathbf{r}') U(\mathbf{r}') \psi(\mathbf{k}; \mathbf{r}')}_{\text{particular integral}} \quad (4.1.5.1)$$

**Check:**

$$\begin{aligned} (\nabla^2 + k^2)\psi(\mathbf{k}; \mathbf{r}) &= 0 + \int d^3r' \delta(\mathbf{r} - \mathbf{r}') U(\mathbf{r}') \psi(\mathbf{k}; \mathbf{r}') \\ &= U(\mathbf{r}) \psi(\mathbf{k}; \mathbf{r}) . \quad QED \end{aligned} \quad (4.1.5.2)$$

Now  $\psi(\mathbf{k}; \mathbf{r})$  takes the form of the required scattering solution, namely

$$\psi(\mathbf{k}; \mathbf{r}) = e^{i\mathbf{k} \cdot \mathbf{r}} + \text{outgoing waves} . \quad (4.1.5.3)$$

To see this consider  $\mathbf{r} \rightarrow \infty$  such that  $|\mathbf{r}| \gg |\mathbf{r}'|$ . Can always do this if  $U(\mathbf{r}')$  vanishes sufficiently fast as  $\mathbf{r}' \rightarrow \infty$ . Then we can expand under the integral sign. Have

$$|\mathbf{r} - \mathbf{r}'| = (r^2 + r'^2 - 2\mathbf{r} \cdot \mathbf{r}')^{1/2} \approx r - \hat{\mathbf{r}} \cdot \mathbf{r}' . \quad (4.1.5.4)$$

Define  $\mathbf{k}' = k\hat{\mathbf{r}}$ , and then

$$G_0^{(+)} \approx -\frac{1}{4\pi} \frac{e^{ikr}}{r} e^{-i\mathbf{k}' \cdot \mathbf{r}'} , \quad (4.1.5.5)$$

and so

$$\psi(\mathbf{k}; \mathbf{r}) \approx e^{i\mathbf{k} \cdot \mathbf{r}} - \frac{1}{4\pi} \frac{e^{ikr}}{r} \int d^3r' e^{-i\mathbf{k}' \cdot \mathbf{r}'} U(\mathbf{r}') \psi(\mathbf{k}; \mathbf{r}') . \quad (4.1.5.6)$$

Comparing with earlier definition in eqn. (4.2) we identify the scattering amplitude as

$$f(\mathbf{k}, \mathbf{k}') = -\frac{1}{4\pi} \int d^3r' e^{-i\mathbf{k}' \cdot \mathbf{r}'} U(\mathbf{r}') \psi(\mathbf{k}; \mathbf{r}') , \quad (4.1.5.7)$$

where  $\mathbf{k} \cdot \mathbf{k}' = k^2 \cos \theta$  (i.e.,  $\mathbf{k} \cdot \mathbf{r} = kr \cos \theta$  and  $\mathbf{k}' = k\hat{\mathbf{r}}.$ )

### 4.5.2 The Born series

Solve the integral equation by iteration

$$\psi(\mathbf{k}; \mathbf{r}) = e^{i\mathbf{k} \cdot \mathbf{r}} + \int d^3r' G_0^{(+)}(k; \mathbf{r} - \mathbf{r}') U(\mathbf{r}') \psi(\mathbf{k}; \mathbf{r}'). \quad (4.2.5.1)$$

Define

$$\phi_{n+1}(\mathbf{r}) = \int d^3r' G_0^{(+)}(k; \mathbf{r} - \mathbf{r}') U(\mathbf{r}') \phi_n(\mathbf{r}'), \quad \text{with } \phi_0(\mathbf{r}) = e^{i\mathbf{k} \cdot \mathbf{r}}. \quad (4.2.5.2)$$

Then the formal solution is

$$\psi(\mathbf{k}; \mathbf{r}) = \sum_{n=0}^{\infty} \phi_n(\mathbf{r}). \quad (4.2.5.3)$$

This is the **Born series** for the wavefunction. Then have

$$f(\mathbf{k}, \mathbf{k}') = -\frac{1}{4\pi} \sum_n \int d^3r' e^{-i\mathbf{k}' \cdot \mathbf{r}'} U(\mathbf{r}') \phi_n(\mathbf{r}'). \quad (4.2.5.4)$$

In compressed notation the iterated series has the form

$$\begin{aligned} \psi &= \phi_0 + \int G_0 U \phi_0 + \int \int G_0 U G_0 U \phi_0 + \int \int \int G_0 U G_0 U G_0 U \phi_0 + \\ &\dots + \left( \int \dots \int G_0 \dots U \phi_0 \right) + \dots \end{aligned} \quad (4.2.5.5)$$

The integrals are convolutions of the form explicitly shown above (I have dropped the "+" on  $G_0$  for ease of notation).

The **Born approximation** consists of keeping just the  $n = 0$  term:

$$\begin{aligned} f_0(\mathbf{k}, \mathbf{k}') &= -\frac{1}{4\pi} \int d^3r' e^{-i\mathbf{k}' \cdot \mathbf{r}'} U(\mathbf{r}') e^{i\mathbf{k} \cdot \mathbf{r}'} \\ &= -\frac{1}{4\pi} \tilde{U}(\mathbf{k}' - \mathbf{k}) \equiv -\frac{m}{2\pi\hbar^2} \tilde{V}(\mathbf{k}' - \mathbf{k}). \end{aligned} \quad (4.2.5.6)$$

This gives the differential scattering cross-section

$$\frac{d\sigma}{d\Omega} \approx |f_0|^2 = \left( \frac{m}{2\pi\hbar^2} \right)^2 |\tilde{V}(\mathbf{k}' - \mathbf{k})|^2. \quad (4.2.5.7)$$

The next approximation is

$$\begin{aligned} f_1(\mathbf{k}, \mathbf{k}') &= -\frac{1}{4\pi} \int d^3r' e^{-i\mathbf{k}' \cdot \mathbf{r}'} U(\mathbf{r}') \int d^3r'' G_0(\mathbf{k}; \mathbf{r}' - \mathbf{r}'') U(\mathbf{r}'') e^{i\mathbf{k} \cdot \mathbf{r}''} \\ &= -\frac{1}{4\pi} \int \frac{d^3q}{(2\pi)^3} \int d^3r' e^{-i(\mathbf{k}' - \mathbf{q}) \cdot \mathbf{r}'} U(\mathbf{r}') \times \\ &\quad \frac{(-1)}{q^2 - k^2 - i\epsilon} \int d^3r'' e^{-i(\mathbf{q} - \mathbf{k}) \cdot \mathbf{r}''} U(\mathbf{r}'') \\ &= -\frac{1}{4\pi} \int \frac{d^3q}{(2\pi)^3} \tilde{U}(\mathbf{k}' - \mathbf{q}) \frac{(-1)}{q^2 - k^2 - i\epsilon} \tilde{U}(\mathbf{q} - \mathbf{k}). \end{aligned} \quad (4.2.5.8)$$

Can be extended to  $f_n(\mathbf{k}, \mathbf{k}')$  and can give diagrammatic representation:

$$f(\mathbf{k}, \mathbf{k}') = \begin{array}{c} \begin{array}{c} \nearrow \mathbf{k}' \\ \searrow \mathbf{k} \\ \bullet \\ \uparrow \mathbf{k}' - \mathbf{k} \end{array} + \begin{array}{c} \nearrow \mathbf{k}' \\ \bullet \\ \leftarrow \mathbf{q} \\ \bullet \\ \leftarrow \mathbf{q} - \mathbf{k} \\ \bullet \\ \leftarrow \mathbf{q} \end{array} + \begin{array}{c} \nearrow \mathbf{k}' \\ \bullet \\ \leftarrow \mathbf{q}' \\ \bullet \\ \leftarrow \mathbf{q} \\ \bullet \\ \leftarrow \mathbf{q} \end{array} + \dots \end{array} \quad (4.2.5.9)$$

$$\begin{array}{c} \uparrow \mathbf{p} \\ \bullet \end{array} \quad \text{factor of } \tilde{U}(\mathbf{p}), \quad \begin{array}{c} \mathbf{q} \\ \leftarrow \bullet \end{array} \quad \text{factor of } \frac{-1}{q^2 - k^2 - i\epsilon}$$

$$\int \frac{d^3q}{(2\pi)^3} \quad \text{for each internal momentum } \mathbf{q}, \quad \text{and overall factor of } -\frac{1}{4\pi}.$$

This is similar to Feynman diagrams for perturbation theory. It is assumed that  $U$  is weak in some sense and so the series converges.

### Example of Born approximation

Choose the Yukawa potential

$$V(\mathbf{r}) = \lambda \frac{e^{-\mu r}}{r} \implies \tilde{V}(\mathbf{q}) = \frac{4\pi\lambda}{q^2 + \mu^2}. \quad (4.2.5.10)$$

Here  $1/\mu$  is the range of the force. We have

$$\mathbf{q} = \mathbf{k} - \mathbf{k}' \implies q^2 = 2k^2 - 2k^2 \cos \theta = \frac{4mE}{\hbar^2} (1 - \cos \theta), \quad (4.2.5.11)$$

and so

$$\tilde{V}(\mathbf{q}) = \frac{4\pi\hbar^2\lambda}{\hbar^2\mu^2 + 4mE(1 - \cos \theta)} = \frac{4\pi\hbar^2\lambda}{\hbar^2\mu^2 + 8mE(\sin \theta/2)^2}. \quad (4.2.5.12)$$

Using eqn. (4.2.5.7) we get

$$\begin{aligned} \frac{d\sigma}{d\Omega} &= \left( \frac{m}{2\pi\hbar^2} \right)^2 \frac{16\pi^2\hbar^4\lambda^2}{[\hbar^2\mu^2 + 8mE(\sin \theta/2)^2]^2} \\ &= \frac{4m^2\lambda^2}{[\hbar^2\mu^2 + 8mE(\sin \theta/2)^2]^2}. \end{aligned} \quad (4.2.5.13)$$

For Rutherford scattering on an electric charge  $e$  have  $\mu = 0$ , and  $\lambda = e^2/4\pi\epsilon_0 \equiv \alpha\hbar c$  ( $\alpha = 1/137$  is fine structure constant). So we get

$$\frac{d\sigma}{d\Omega} = \frac{\lambda^2}{16E^2(\sin \theta/2)^4} = \left( \frac{\alpha\hbar c}{4E} \right)^2 \frac{1}{(\sin \theta/2)^4}. \quad (4.2.5.14)$$